



*The Official Publication of the Ravensworth Farm Civic Association, Inc.  
Springfield, Virginia*

March 2014

**The Ravensworth *Farmer***

VOL. XLVIV Issue 6

### FROM THE PRESIDENT

As of this writing the polar vortex is still a vivid memory. Winter is definitely here and so far we've had more snow than the last two years combined. Having grown up in Burke Centre I honestly can't remember a time when we had this many consecutive below-freezing high temperatures. My wife and I enjoy the cold weather and snow this time of year so as long as it's winter we may as well act like winter.

I have a few updates I'd like to share and a couple of announcements.

**January Real Estate Meeting** Unfortunately a lot of residents missed the January general membership meeting due to the cold. However, the presentation by Ellen Ing from RE/MAX and Mike Stein from McLean Mortgage Corporation was enjoyable and informative. The Q&A session that followed was equally as good and all of us on the Ravensworth Farm board thank them for their time that evening. We're still working on the topic for our April meeting so stay tuned to the website and Facebook for updates. Once we lock it down, an email will be sent out to everyone on the distribution list. If you haven't yet signed up you can do it here, right below the calendar on the right hand side:  
<http://www.ravensworthfarm.org>

*Con't Pg. 3*

### **The Farmer is ONLINE**

If you already lined the birdcage with The Farmer and now want information from it, you can always go online to [www.ravensworthfarm.org](http://www.ravensworthfarm.org) and read the digital edition.

### **INSIDE**

**Golden Ravens**  
pg. 5

**Real Estate and Mortgage Trends**  
pg. 7

**Upcoming Events**  
pg. 13

**Red Light Cameras**  
pg. 15

**GENERAL MEETING - March 27th**  
The next General Meeting of the Ravensworth Farm Community Association will be Thursday, March 27 at Ravensworth Elementary School.

Article 1, Section 3, of the Civic Association's By-Laws provides that the Association shall be strictly non-partisan, non-political, and non-sectarian. Accordingly, the invitation of elected officials and other public figures to speak at Association meetings, and the inclusion of paid political or commercial advertisements in the Farmer or in the attached flyers, do not constitute endorsements by the Association.

## RAVENSWORTH FARM CIVIC ASSOCIATION

### EXECUTIVE COMMITTEE

President	Kevin Joyce	703-587-7989	prez@ravensworthfarm.org
1st Vice President	VACANT		
2nd Vice President	Dean Fix	703-321-3048	vp2@ravensworthfarm.org
Recording Secretary	Ginger Rogers	703-321-1151	recsec@ravensworthfarm.org
Corresponding Secretary	Stephanie Hammond	703-321-0546	
Treasurer	Richmon Tun	703-321-1404	treasurer@ravensworthfarm.org

### STANDING COMMITTEES

Legislative & County Affairs	Vacant		
Public Service (Streets / Sidewalks)	Tom Terry	703-209-2675	rfnw@ravensworthfarm.org
Schools & Education	Jill Mowbray Maria Dastur	703-865-8368	bjm820@hotmail.com mariacdastur@gmail.com
Green Committee	Jim Hickey	703-321-8535	
Membership & Communications	Elissa Myers	703-321-7590	
Zoning Committee	Ellen Eggerton	703-321-4948	

### SPECIAL COMMITTEES

Entrance Committee	Marti Terry Brenda Soares Margaret Kinder	703-209-4424 703-321-7856 703-764-9576		
Hospitality	Jacqueline Fix Ruth Hartman	703-321-3048 703-321-8063	hospitality@ravensworthfarm.org	
New Neighbors	Jill Mowbray	703-865-8368	bjm820@hotmail.com	
Cultural Committee				
Spanish	Dinora Gonzalez	703-321-0160		
Korean	Seo Pani	703-321-8081		
Directory	Coordinator Advertising	Stephen Beste Katherine Craig	703-321-9110 703-321-3149	directory@ravensworthfarm.org
<b>Farmer</b>	Editor Preparation Printing, Flyers, Assembly Distribution Advertising	Sara Ortiz Susan Deyampert Laura Asiello Jacqueline Fix Katherine Craig	703-321-8757 703-321-3150 703-321-7840 703-321-3048 703-321-3149	rfcafamer@ravensworthfarm.org jfasiello@aol.com hospitality@ravensworthfarm.org
Neighborhood Watch	Tom Terry	703-209-2675	rfnw@ravensworthfarm.org	
PTA President, Ravensworth ES	Anita Bhatnagar	703-942-6806	president@ravensworthpta.org	
Pool President	Rob Hannam	703-321-7398		
Green Thumb Garden Club	Doddie Cave Nancy Jarvie	703-321-9773 703-321-8319		
Golden Ravens	Joan Crofford	703-321-7809		

## Association Calendar 2013 - 2014

MONTH	BOARD MEETING	<i>Farmer</i> DEADLINE	FLYER DEADLINE	PRINT <i>Farmer</i>	DELIVERY	ASSOC. MEETING
March	5	5	7	12	22	27
April	2	2	4	9	26	
May	Apr. 30	Apr. 30	2	7	17	22

**General and Board meetings will be held at Ravensworth Elementary School. Meetings are canceled in the event of Fairfax County Public Schools' early closing or school cancelation. Meetings are at 7:30pm unless otherwise announced.**

*Con't from Pg. 1*

**RFCA Membership** We're in the middle of our annual membership drive. Don't worry if your block captain hasn't been by yet, the weather played a large part in the delay. Personally I'm guilty of procrastinating, too. By the time this reaches your door I hopefully will have knocked on all the doors on our street. If you think you missed your block captain, contact Elissa Myers at 703-321-7590 and she can sign you up. Your dues go towards helping a number of essential programs in the community like this newsletter, the directory, and events like the popular annual hayride, community picnic, and Halloween party. Your board also makes an annual donation to the Ravensworth Farm Elementary School. This year we purchased an identification card scanner to help Principal Salata's security initiative at the school.

About a year ago we announced an opportunity for a \$5,000 grant for community or environmental improvement in our neighborhood called the **495 Express Lanes Community Grant Program** that was sponsored by Transurban and Fluor. I had to extend the deadline twice to allow some key changes to submissions but in the end we only ended up with one qualifying proposal. I submitted a great proposal from Karole and Bob Nielsen. Their proposal sought to "seek funding through the community grant program to continue the pet waste management program in the Ravensworth Farm community" and it involved some overdue maintenance and restocking of pet waste bags to the stands around the lake. Those stands and bags are actually a result of dedicated volunteers and are privately funded but stocked by the park service. The supply of bags was running low and maintenance was overdue. I haven't yet heard back but once I do I'll promptly share the news. Cross your fingers.

**Braddock Road Widening** Plans are underway to widen and improve Braddock Road from the beltway to Guinea Road. As our representative on the Braddock District Council, I'll update the community as it progresses. It's extremely early in the planning phase and construction likely won't begin until sometime in 2015 but this is a critical time when Supervisor Cook collects community input. He's taken a very proactive role in soliciting community involvement. If you have comments or concerns please come to the next general membership meeting at the Ravensworth Farm elementary School at 7:30 on May 22 or feel free to call or email me. One question I posed at our January meeting was whether there was interest in sound barriers along Braddock from Inverchapel to Queensberry. Opinions?

**Bridge Across the Creek?** The County Park Service is undertaking a study for a bridge to cross the creek on the dam side. I run the lake 3-4 times a week, weather permitting, but have never felt like the 1-2 times a month when heavy rains cause flooding that it warranted spending \$350k - \$400k. Then again I'm the kind of person who won't hesitate to take his shoes and socks off, when it's calm enough, and cross to the other side. Please feel free to reach out with your ideas and suggestions on this matter, too. For example, is there any interest in building a foot path from the park to the VRE instead?

*Con't Pg. 4*

*Con't from Pg. 3*

**Dangerous Dog** Many of you are already aware of a dangerous dog in the neighborhood that attacked 3-4 people last year. It was deemed Dangerous by the county and the owners complied with additional county regulations required when keeping a Dangerous dog. Unfortunately it attacked again by biting a mail carrier this past January. Police and animal control are involved and it entered the legal process. All indications suggest we won't see any further attacks from this animal. We're very lucky someone wasn't more seriously injured or pets attacked and I'm thankful for the swift and professional response from the police and animal control. Suffice it to say keeping a violent animal as a pet is a bad idea. It sounds like common sense but, as you can see, it does happen. If you suspect a pet is violent, warn your neighbors. If it attacks, the proper course of action is to promptly contact Fairfax County Animal Control.

**Spring Yard Sale** Mark your calendars for our spring yard sale at the Ravensworth Swim Club. Our friends at the Ravensworth Farm Swim Club have generously opened their property to this annual event. It's a great opportunity to turn some of your "treasures" into gold and mix with others in the community. It's scheduled for May 3rd. Stay tuned for the start time- usually early in the morning and runs into the afternoon.

In the meantime, stay warm, build a fire, make some hot chocolate, and think snow.

RFCA President, Kevin Joyce  
prez@ravensworthfarm.org



- Windows
- Doors
- Siding
- Bath & Kitchen Remodeling

**Superior Ratings for  
Honesty & Quality Performance  
in Consumer Reports**



**We care about the Ravensworth  
Community. We offer superior  
windows, doors and siding with  
excellent customer service.**

**(703)956-6172  
www.WindowsPls.com**

## **OF GROUNDHOGS AND GOLDEN RAVENS**

Potomac Phil may call for more winter but the Golden Ravens are ready for Spring. After hunkering down during the deep freeze the seniors of Ravensworth Farm are on the prowl again. Whether it is visiting a local area restaurant or holding a pot luck lunch they all are invited to share in the new season of friends and fellowship. If you are a retired senior come on down and meet up with your neighbors at the Community Church on the fourth Wednesday at 11:30AM and see what may develop. For details or help with transport call Joan Crofford at 703-321-7809.

## **POOL REGISTRATION OPEN**

Attention Farmers - are you ready for your summer dreams to come true? Join the Ravensworth Pool this year!

Early Bird Registration is OPEN NOW through May 3, 2014. The webstore is open for you to purchase your memberships and sign up for swim team, dive team and fledglings. Discounted 10-packs of Guest Passes and Ravens cash cards will also be available. To incentivize you to get online early, we'll be raffling off a 10-pack of Guest Passes on April 1 for those members who've paid their dues and taken advantage of the early bird discount.



We will also offer the Senior Discount Membership this year!

Teens (14 and over) interested in working at the pool this summer either as a lifeguard or in concessions may apply online beginning March 1, 2014. Please note that all applicants must be RFSRC pool members. Lifeguards must be 15 or over.

We are looking forward to another great season with our swim and dive teams! If your child is interested in being a member of BOTH swim team and dive team, THEY CAN!!! Meets and practices are held at different times. We always LOVE to see some new swimmers and divers join each year. No previous experience is necessary. GO RAVENS!!!!

Please visit our website, [www.ravensworthfarmpool.com](http://www.ravensworthfarmpool.com), for more details and to get signed up. If you have specific questions, please send an email to [membership@ravensworthfarmpool.com](mailto:membership@ravensworthfarmpool.com).

We look forward to seeing you poolside.

Your RFSC Pool Board

## **MOMS IN PRAYER GROUP**



Several moms in the neighborhood meet weekly for one hour to pray for their children, schools, teachers and staff. We are a local chapter of a worldwide Christian organization called Moms in Prayer. We would love to have any moms or grandmas in the neighborhood join us. If you are interested and would like to learn more, please contact Sara Ortiz at (703)321-8757 or go to the website <http://www.momsinprayer.org/>



# CLC

## CRAIG'S LAWN CARE

EST. 1985 / LICENSED & INSURED

# 703-385-1641

### MOWING IS OUR SPECIALTY

RESIDENTIAL SERVICES ONLY

## AFFORDABLE LAWN MOWING SERVICES TO MEET YOUR BUDGET

**Mowing as low as \$29\* Weekly**

\*Price based on about 4000 square feet of lawn

**Service includes mowing, trimming & edging**

**FREE ESTIMATES**

**SENIOR CITIZEN DISCOUNTS**

**OTHER SERVICES WE PROVIDE**

**Shrub/Bush Trimming  
Spring Cleanup/Mulching  
Leaf Removal**



**REAL ESTATE & MORTGAGE TRENDS -  
FROM THE JANUARY 29 RFCA MEETING**

by: Ginger Rogers

Speakers: Ellen Ing, Realtor, RE/MAX Allegiance Burke  
Mike Stein, CMPS, Branch Manager/Senior Loan Officer, McLean Mortgage Corporation

Ellen advised the members that the market is currently experiencing the highest level of renters since 1995. Projections for 2014 show that 1.36 million households will be formed but only 850,000 homes are available. She noted that 17% of homes in Ravensworth Farm are rentals.

She also said that on average, homes in Ravensworth were on the market 40 days. The 4th quarter of 2013 was abnormal due to the government shutdown and sequester from Labor Day through Thanksgiving, and also the threat of another shut down/furlough in January 2014.

Generally, attractiveness of a neighborhood depends on the buyer. Is he/she looking for an established neighborhood v. development, i.e., a quiet, gentrified area or a new development with a club house? Ellen, in response to a question, suggested that market criteria include price, condition and location. The most practical updates would be renovations to the kitchen and bathroom.

Ellen provided a handout that includes?

**Ravensworth neighborhood statistics:**

% Owners to Renters: 83% to 17%  
Median Age: 49  
Male/Female Ratio: 50%

**Population of Adults by Age Group**

(Data Source: US Census):

18-20: 36  
21-24: 120  
25-34: 382  
35-54: 838  
55-64: 269  
65-74: 320  
75+: 134

**Income Brackets**

(Data Source: US Census)

>\$150K: 146  
\$125K-\$150K: 134  
\$100K-\$125K: 140  
\$75K-\$100K: 112  
\$50K-\$75K: 239  
\$35K-\$50K: 41  
\$25K-\$35K: 19  
<\$25K: 40

**Presidential Voting Patterns**

(Data Source: USElectionAtlas.org):

Votes Democrat: 59.6%  
Votes Republican: 39.1%

**Average Commute Time**

(Data Source: US Census):

<15 min: 8.7%  
15-30 min: 43.5%  
30-45 min: 31.7%  
45-60 min: 10.1%  
>1 hr.: 6.0%

**How People Get To Work**

(Data Source: US Census):

Drove Alone/Carpool/Motorcycle: 1,202  
Public Transit: 98  
Work At Home: 12  
Walk: 0  
Bicycle: 0



Mike Stein talked of the mortgage guidelines in place today v. 2001-2005. Today's mortgage rate is about 4.5%, and advised that now is a good time to buy or refinance, do not wait to see if the rates will go lower. As a result of Quantitative Easing, the Fed announced that it is scaling back on buying bonds and rates will go up.

*Con't from Pg. 7*

**Mortgage Guidelines:**

2001 -2005

- Sub-prime loans
- Low document/no documents/stated income accepted
- Super simple loan (not verified)
- Assets, Income, Credit, and Collateral (if one was bad, loan would be approved)

**Current Underwriting Guidelines**

- All loans require full documents
- Tax Transcripts are pulled
- SSN verification
- Income – proof
- Assets, deposits (need to show where came from), liquidity
- Credit Score, higher minimum score required: was 740, now 760

**KINDERGARTEN ORIENTATION AT RAVENSWORTH ELEMENTARY**

by Ms. Roxanne Salta, Principal

As the new school year quickly approaches, we would like to invite you to attend our Kindergarten Orientation Meeting on Monday, March 31, 2014 from 2 pm to 3 pm. If your child is going to be five years old by September 30, 2014, please make plans to attend.

Registration is open now! Call Mrs. Lemaitre at 703-426-3600 for details.

We hope to see you there!



**PARKWOOD WEE CENTER REGISTRATION OPEN**

The closest preschool to Ravensworth Farm is just four minutes door-to-door (not counting the time it takes to buckle junior into the car seat). Parkwood WEE (Weekday Early Education) Center offers quality, Christian preschool for ages 16 months to five years on two, three, and four-day schedules from 10am-2pm. Potty-trained children can also participate in one-hour enrichment classes up to three days a week from 2-3pm either stand-alone or in addition to regular daytime classes.

Tours are available by appointment only- Tuesday - Friday, 10:30 am – 1:00 pm. Registration forms can be submitted in person at the WEE Center Office Tuesday - Friday. Call Ann (Asiello) Lipton, WEE Center Director, for an appointment. Mrs. Lipton grew up on Inverchapel Road and still spends time here with family.

Parkwood WEE Center is located at 8726 Braddock Road (Kings Park Drive and Braddock Rd). Tel: 703.978.0640; [www.weecenter.com](http://www.weecenter.com)

**Note: Find the January 2013 Farmer online to read a Gem Review of Parkwood WEE Center.**



**SOCIAL MEDIA TUTORING OFFERED**

Kings Park Library offers one-on-one tutoring for the social media impaired. Learn the basics of Flickr, Facebook, YouTube, Twitter, and Skype with a one-on-one technology volunteer about the social networking tools that can help you stay in touch with your kids and grandkids. For adults. Call Kings Park Library to sign up for a time.

**BULLYING MORE LIKELY AT SCHOOLS WITH ANTI-BULLYING PROGRAMS**

By SHERYL KAY, January 3rd, 2014; Univ of Florida, Shands Health, Health in a Heartbeat

It really goes against everything that would seem logical. Many schools are working diligently to address issues of bullying, including establishing yearlong programs to help educate students. But new research shows that children who attend schools with anti-bullying programs actually report more bullying than those who attend schools that don't have such programs.



Recently published in the Journal of Criminology, the report included data from the Health Behavior in School-Aged Children study. The researchers analyzed records from 7,000 students, specifically noting any report of bullying, be it verbal or physical.

The findings showed that while race and ethnicity did not play any part, boys were more likely to report physical altercations, while girls recounted more occurrences of emotional bullying. They also found that older students were less likely to be victims of this abuse than younger student. Bullying was also less common when parents and teachers were involved in day-to-day student affairs.

*Con't Pg. 10*

**R & M**

**CLEANING  
SERVICES**



- RELIABLE
- EXPERIENCED
- GOOD REFERENCES
- FLEXIBLE SCHEDULING
- REASONABLE RATES

**WE BRING OUR OWN EQUIPMENT**

*Free In-home Estimate  
Weekly/Bi-weekly/Monthly or Occasionally  
Move-in or Move-out Office*

**Call MARYEN or RAUL at  
(703) 321-5335**



**NUGENT  
ELECTRIC**

**Licensed \* Bonded \* Insured**

**TOP QUALITY WORK**

**703-569-0345**

***Ravensworth Resident***



**R. K. MORRIS**  
Painting  
Contractors  
Inc.

*Small Jobs Welcome* *Free Estimates*

**PAINTING & REMODELING**

**Complete Services For:**

- Interior & Exterior Painting • Kitchens & Bathrooms
- Wood Replacement • Trim & Crown Molding
- Finished Basements • All Flooring
- Wallpaper Removal • Handyman Services

Licensed & Insured  

**703-987-7139**

*Guaranteed  
Quality  
Workmanship*

[www.rkmremodeling.com](http://www.rkmremodeling.com)

*Con't from Pg. 9*

Although the studies did not address what might specifically encourage a student to pick on others, the fact that bullying happened more at schools with anti-bullying programs left the researchers wondering if perhaps the students were actually learning new bullying techniques from the programs. Another thought? Students exposed to bullying prevention programs might be better schooled at spotting the signs of bullying and more willing to report it.

Regardless, the researchers aren't encouraging schools to drop their anti-bullying programs. They are, however, encouraging educators to revisit how anti-bullying material is presented and how the follow-up is conducted.

After all, all students have a right to feel safe in school.

### **GEM REVIEW: COBBLER'S BENCH SHOE REPAIR**

by Kevin Joyce

I'm a big fan of Eddie's Shoe Repair in Ravensworth Shopping Center but for jobs they can't handle I go to Cobbler's bench. Their work is excellent and the work is delivered on time. I was recently there to repair a snap and it required some tailoring to open up the fabric. I saved a lot of money by having it repaired instead of replacing it. They expertly matched the snap and I couldn't tell there was any difference from the original. The service is friendly and is very convenient to since they're next to Springfield Mall. Tel: (703) 313-9736; cobblerbenchshoerepair.com; 6701 Loisdale Rd, Springfield



**WELCOME NEW NEIGHBORS**

New folks move in all the time. If you have new neighbors, tell Jill Mowbray. If you are a new neighbor- welcome! Please let Jill know you have arrived so that one of her New Neighbor Committee members can stop by with information and some goodies. Jill Mowbray (703-865-8368, [bjm820@hotmail.com](mailto:bjm820@hotmail.com))



**CONDOLENCES & CONGRATULATIONS**

**Get Well Soon** - Mrs. Jeffries, school crossing guard at Ellet and Nutting, dislocated her shoulder when she slipped on ice at the end of January. Fairfax County Police officers are directing traffic at the intersection until Mrs. Jeffries returns.

**Condolences** - Mrs. Evelyn Middleton passed away suddenly on December 15, 2013. Mrs. Middleton lived at 5211 Inverchapel Road for over 50 years. She and her surviving husband, Champ, are the original owners.

**REMINDER: THE RAVENSWORTH FARMER...**

... may not be delivered to homes that compromise the safety of the scout troop that delivers it. This includes homes that may have loose or unfriendly pets, hazardous walkways, or other impediments to safe delivery by the scouts. The Farmer is always available for viewing one week after home delivery on the Ravensworth Farm web site, <http://www.ravensworthfarm.org>.



CLASSIFIED ADS may be placed in The *Farmer* at no cost to Ravensworth Farm residents. Classified ads may be placed by sending them to [rfcfarmer@ravensworthfarm.org](mailto:rfcfarmer@ravensworthfarm.org) or to PO Box 1020, Springfield, VA 22151. The classified ad section is a service to Ravensworth residents and is not intended for business or commercial use. Ads for house sales, commercial services, etc. will be run in this section once. If you wish to repeat your ad, you will need to purchase advertising in The *Farmer*.

<b>FOR SALE</b>	Cello (4/4 size), bow (needs restringing), soft and hard carrying cases, music stand, tuner, instruction books, etc. Asking \$150.00. Call either (703) 321-8934 or 571-217-6605.
<b>HELP DC HOMELESS</b>	Usable clothing and shoes, blankets, canned foods, etc., collected by a charitable foundation for the winter needs of homeless folks in D.C. Call for free pickups 703703-321-9268. For details, visit <a href="http://www.Kassirfoundation.org">www.Kassirfoundation.org</a> .
<b>WANTED</b>	Good used furniture for needy low income families in the Annandale area. Needed are beds, dressers, kitchen tables & chairs, sofas, love seats, end tables lamps and TV's. Unfortunately, we cannot take sleep-sofas. Call Bill Sinclair at 703-321-7529 or the Annandale Christian Community for Action warehouse at 703-256-1991 Call the warehouse ONLY on Saturday mornings.

## WHAT TO DO IF YOU GET STUCK IN THE SNOW IN YOUR CAR

Posted on Annandale.Patch.com January 22, 2014

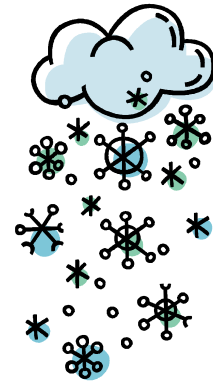
By Jamie Rogers

It's one of the worst things that can happen when you're on the road and away from home: The car is stuck in the snow and you are stuck in the car.

Local police said people often become stranded in their cars especially when they are caught off guard by winter weather events. Now is the time to prepare for the worst case scenario.

Here's what you should do:

1. Call for help.
2. If the car can't be removed from the snow, stay inside. Don't try to walk to find help, there's a much better chance of being found if you are with your car and not out in the elements.
3. Tie a red cloth to the outside of the car to signal for help.
4. Start the engine for 10 minutes each hour for warmth
5. Crack a window for ventilation and to avoid carbon monoxide poisoning.
6. Make sure the rear exhaust pipes are clear of snow.



# *Harms Realty*

## *Tom Harms ~ Broker*

### *Ravensworth Farm Resident*

*More Listings Sold in  
Ravensworth Farm Than  
Any Other Active Realtor®*

**703-321-7476**

***tomharms @verizon.net***



***www.harmsrealty.com***



Community of Christ

**Experience a Ravensworth community church where all are welcome.**

5610 Inverchapel Road, Springfield, VA  
(703) 321-0507 (church)  
(703) 409-1920 (pastor)

**Sunday Services:**

9:30 a.m. Classes for all ages  
10:45 a.m. Worship Service

**Please join us for these community activities:**

Children's Playground  
Picnic Area  
Ravensworth Golden Ravens  
Community Picnics and Yard Sales  
Christmas and Easter Special Activities for Everyone!

We proclaim Jesus Christ and promote communities of joy, hope, love, and peace.

**www.CofChrist.org**  
**www.cofchrist-cbmc.org**

## **EVENTS**

Is there an event that should be here? Email [rfcafarmer@ravensworthfarm.org](mailto:rfcafarmer@ravensworthfarm.org)

March 1 - **Online Employment Applications** at [ravensworthfarmpool.com](http://ravensworthfarmpool.com) for teen summer employment.

March 4 - 2pm - **Genealogy 101** - Kings Park Library

March 5 - 4pm - **Legos in the Library** - Ages 6-12. Legos supplied. Kings Park Library

March 7 - 2pm - **Tax Relief Workshop for Seniors & Disabled** - Braddock Hall (connected to Kings Park Library)

March 10 - 10:30am - **Celebrate Seuss Storytime** - ages 3-5. Kings Park Library

March 11 - 4pm - **Pokemon Club** - ages 6-12, Kings Park Library

March 13 - 1:30 - **Gentle Chair Yoga** - Kings Park Library meeting room, ages 55+

\*\*March 15 - **Community Clean-Up Day**, morning, at Ravensworth Elementary

March 18 - 10:30am- **Small Oneders Storytime** - ages 12-23 months, Kings Park Library

March 21 - **Parkwood WEE Center Silent Auction** - Parkwood Baptist Church, great deals on good stuff!

[www.weecenter.com](http://www.weecenter.com)

March 23 - **Electric Sunday** - I-95 Complex, 9850 Furnace Rd, Lorton 22079

March 26 - 10:30am - **Terrific Twos & Threes storytime**, ages 2-3, Kings Park Library

\*\*Mar. 27 - 7:30pm - **Ravensworth Farm Community Association General Meeting** - Ravensworth Elementary

March 31 - 2-3pm - **Kindergarten Orientation at Ravensworth Elementary School**. Parents and rising kindergarteners welcome.

\*\*April 6 - **RFCA Horsedrawn Hayride** - 4:00pm - Community of Christ Church on Inverchapel Rd. Meet the horses at <http://harmonscarriages.com/hayride.htm>.

April 11-13 & 17-19 - **Easter Pageant** - Immanuel Bible Church, Backlick & Braddock, evenings and weekend afternoons, free tickets at <http://www.immanuelbible.net/music-worship/easter-pageant>

April 14-18 - **No School - Spring Break**

April 20 - **Easter Sunday**

\*\*May 3 - **Community Yard Sale** - Ravensworth Farm Pool

May 3 - **Last Day for Ravensworth Farm Pool Early-Bird Registration**

May 10 (rain date) - **Community Yard Sale rain date**

May 26 - **Memorial Day**

\*\*May 22 - 7:30pm - **Ravensworth Farm Community Association General Meeting** - Braddock Road Widening - Ravensworth Elementary

June 20 - **Last Day of School**

Oct. 4 - **Fall Community Yard Sale** - Ravensworth Farm Pool





*Do you want to lose weight and get fit?.....give me a call!*

*Private Fitness Studio*

**FINISH STRONG** <sup>NSC</sup> 

***Kate Alleman Advanced-Certified Personal Trainer Nutritional Consultant***

Phone: (703) 304-4479 e-mail: [finishstrongnsc@gmail.com](mailto:finishstrongnsc@gmail.com) Website: [www.finishstrongnsc.com](http://www.finishstrongnsc.com)

Ravensworth Farm Resident since 1990

FBI Agent retired January 2011

I provide individual or two person training sessions one hour in duration. The training starts with a comprehensive assessment. We will work together to achieve your personal goals.

10% discount for Military and Law Enforcement.

**Basic: Pay as you go**

Single session \$65.00/hr

Two person session \$85/hr

**10 session package**

Single session \$60.00/hr

Two person session \$80.00/hr

**20 session package**

Single session \$55.00/hr

Two person session \$75.00/hr

## **MIRA Construction, Inc.**

**General Contractor**

\* Home Improvements \* Decks & Porches Additions \*

\* Electrical \* Kitchen & Bathroom Remodeling \*

\* Basements \* Window & Door Replacement \*

**\*\*\* Special Discount for Ravensworth Residents \*\*\***

**FREE ESTIMATES LICENSED BONDED INSURED**

**Ravensworth Resident**

**Phone: (703) 321-8811**

## **RED LIGHT CAMERAS KEEP GREEN LIGHT IN VIRGINIA**

Police lobby to maintain programs as safety measure, opponents critical of revenue.

Posted on Annandale.Patch.com, February 08, 2014

By Quinn Casteel, Capital News Service

RICHMOND – Red light cameras will remain legal in Virginia for at least another year, as the House Transportation Committee defeated a bill this that would have forced the discontinuation of such photo-monitoring systems.

The committee voted 13-8 against House Bill 973, sponsored by Delegate Benjamin Cline, R–Amherst, which would have repealed local authority to operate the systems known as “photo red” or “red-light cameras.”



Virginia police from several localities attended this past week’s meeting to lobby in favor of keeping the cameras, citing safety as the number one concern. Localities that have implemented the systems have reported decreases in red-light violations as high as 33 percent and 40 percent.

Delegate Eileen Filler-Corn, D–Springfield, and committee chair Delegate Tom Rust, R–Herndon, were among the House members voting against the bill. “My main reason for voting against it: safety,” Rust said. “A lot of people were saying it saves lives and stops crashes.” Filler-Corn, a fellow Fairfax County delegate, echoed Rust’s opinion. “In Fairfax County we don’t have red-light cameras,” Filler-Corn said, “but I do feel strongly that we need to retain the option and flexibility because I do believe it (cameras) saves lives.”

Among those opposing the monitoring systems and voting for the bill was Delegate Timothy Hugo, R–Centreville, who questions the localities’ motivation. “You’ve seen what they’ve done in D.C. – they shorten the lights to basically increase the revenue,” Hugo said. “I’m very hopeful — right here in the House — we’ve passed a bill to set a standard for the yellow light.”

House Bill 116, sponsored by Delegate Joseph Morrissey, D–Richmond, would tighten regulations on the photo systems in regards to the timing of yellow lights and how law enforcement uses the cameras to monitor right turn lanes. “What you don’t want to see is these lights being used as a revenue builder,” Hugo said.

Virginia Beach is home to the state’s longest-running photo-monitoring program. The city reported it netted \$3.3 million on 12 cameras from 2009 to 2012. Fairfax City has made \$500,000 in profit on just three cameras since 2011 and has plans to add three more, according to a report by WTOP-FM.

Other localities with red-light-camera monitoring include Richmond, Albemarle County, Norfolk, Newport News, Chesapeake, Petersburg, Charlottesville, Blacksburg and Arlington.



8011 Braddock Road • Springfield, VA 22151

**Ravensworth Shopping Center  
Braddock Road & I-495**

**703-321-8280**

"We are on your team  
When it comes to car care!"

- ✓ **Open 24 Hours—7 Days A Week**
- ✓ **Diesel Fuel**
- ✓ **VA safety & Emission Inspections**
- ✓ **Emergency Road Service**
- ✓ **A.S.E. Certified Mechanics**

FAX—703-323-8951



We Accept  
SUNOCO • Master Card • Choice • VISA • Cash Flow  
ravmobil@aol.com

# Call **Crowley** for all your **plumbing needs**

Jim Crowley  
**Master Plumber**

**SAVE \$50\***

**No travel charge**  
for customers in  
Ravensworth Farm

\* Applies to first visit only



*Call Crowley for all of your plumbing needs.*

# (571) 329-3226

7715 Erie Street, Annandale, VA 22003 • Licensed & Insured

# Debbie Doğrul Associates...

**Proudly Serving Our  
Ravensworth Neighbors since 2001**



*Treating the Sale of Your Home  
as if it Were Our Own*

**For a FREE Market Analysis  
Call Us Today at (703) 425-3582**



[www.TeamDDA.com](http://www.TeamDDA.com)

Supporting our troops at  
home and abroad





**Solutions**

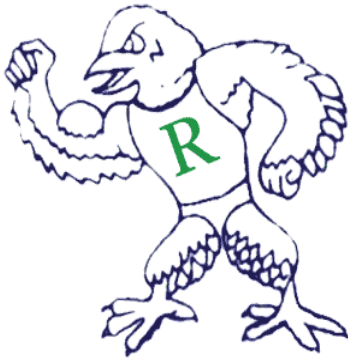
*Serving the Northern Virginia area since 2001*

**Give Solutions a Call Today for Your Answer to:**

<b>Interior Remodeling</b>	<b>Exterior Remodeling</b>
■ Bathrooms	■ Roofing
■ Basements	■ Windows
■ Kitchens	■ Siding
■ Drywall Repair and Painting	■ Trim Cladding
■ ADA Compliance	■ Rotted Wood Repairs
■ And more!	■ And more!

**703-906-6525**  
*solutionsofva@gmail.com*  
**Alex Hamilton, Owner**  
*Class A License & Insured*

Quality Craftsmanship  
 ♦  
 5-Year Warranty  
 ♦  
 Outstanding Service



# Ravensworth Farm Swim & Racquet Club

## Make a Splash! Join the Pool!

**For Summer Fun...  
Your Neighborhood Pool has it All!**

Swim Team  
Fledgling Swim Team  
Swimming Lessons  
Gated Baby Pool  
Movie Nights

Dive Team  
Playground  
Volleyball  
Family Night Party  
Adult Parties

Tennis Camp  
BBQ Grills  
Picnic Area  
Ping Pong Table  
Tennis Courts

Join or renew online at  
**[www.ravensworthfarmpool.com](http://www.ravensworthfarmpool.com)**

**Swim and Dive Team** registration  
information located on line.

### **Summer Employment Opportunities**

Go to the website for more information regarding the following positions: Manager, Life Guard, Snack bar.

## **Mr. Mow is also Mr. Snow**

Quality Landscaping at Affordable Prices

*"the weather outside is frightful  
inside is so delightful  
but outside you don't have to go  
because you called the famous Mr. Snow"*

snow removal            \$50

driveway, walkway, sidewalk & porch

leaf removal            @ \$150

no leaf left behind

gutter cleaning        \$60

clogged gutters will ice up and fail

powerwashing

get it clean before the snows come

call for bush trimming,  
mulching or your other late Fall clean-up projects

**(703) 503-3130**

*100% satisfaction guaranteed    senior discounts    free estimates*



# RE/MAX Allegiance



"As a 22 year Springfield resident and full service agent, I am your area expert for actively marketing your home! The proof is in the results...call me to discuss getting your home sold quickly and professionally.

Not quite ready yet? Call me for a free market analysis of your home and neighborhood. I'll also include a buyer's and/or seller's guide for you to use."

- Jo Ann

**Jo Ann Kennel, Realtor®**

**RE/MAX Allegiance**

**Office: 703-866-0302**

**Cell: 703-403-3899**

**eMail: jakennel@cox.net**

**RE/MAX Allegiance**

5641 Burke Centre Parkway  
Burke, VA 22015

*Each office independently owned and operated*

If your home is currently listed by another Broker, this is not intended as a solicitation of that listing.

To view more properties, visit my website at: <http://www.homesdatabase.com/joannkennel>