



MANDR HOUSE 1796-1925
RAVENSWORTH PLANTATION, VA.

*The Official Publication of the Ravensworth Farm Civic Association, Inc.
Springfield, Virginia*

February 2022

The Ravensworth ***Farmer***

Issue 4

2021 HOLIDAY LIGHTS WINNERS

Thank you to all who decorated their homes and those who judged The Ravensworth Farm Holiday Lights! Here are the winners and honorable mentions plus Holiday Greetings and notes from the judges!

The Winners are:

- Best Overall - 5516 Inverchapel
- Best Religious - 7919 Ellet
- Best Window/Door - 5671 Ravenel
- Kid's Choice - 5231 Nutting

Honorable Mention:

- 8121 Adair
- 8103 Bullock
- 8123 Bullock
- 8007 Ellet
- 8009 Ellet
- 7904 Gosport
- 7916 Gosport
- 7920 Gosport
- 8008 Gosport
- 5415 Inverchapel



Con't Pg. 3

RAVENSWORTH FARM Community Activities & News

**NEXT GENERAL
MEMBERSHIP MEETING**
March 24, 2022—7:30AM (Online)

Ravensworth ES News, Pg. 4

Nearly Six Decades Living at
Ravensworth's Summit (*Rob Blizard*), pg. 5

Troop 991 - Wreaths Across America, pg. 7

What is a Watershed (*Lisa Reynolds*), pg. 7

The Etymology of Street Names in
Ravensworth Farm (*Roberto Bernate*), pg. 11

Friends of Lake Accotink Park (FLAP)
Events & News, pg. 19

Article I, Section 3, of the Civic Association's By-Laws provides that the Association shall be strictly non-partisan, non-political, and non-sectarian. Accordingly, the invitation of elected officials and other public figures to speak at Association meetings, and the inclusion of paid political or commercial advertisements in the Farmer or in the attached flyers, do not constitute endorsements by the Association.

RAVENSWORTH FARM CIVIC ASSOCIATION

P.O. BOX 1733, SPRINGFIELD, VA 22151

EXECUTIVE COMMITTEE

President	Marcie Winit	703-678-9074	prez@ravensworthfarm.org
1st Vice President	John Ritchie	703-321-8427	vp1@ravensworthfarm.org
2nd Vice President	Richard Hildebrand		vp2@ravensworthfarm.org
Recording Secretary	Ginger Rogers	703-321-1151	recsec@ravensworthfarm.org
Corresponding Secretary	Diwakar Sharma	571-314-2400	corsec@ravensworthfarm.org
Treasurer	Kristoffer Hull	703-517-8471	treasurer@ravensworthfarm.org

STANDING COMMITTEES

Schools & Education	Jill Mowbray	703-865-8368	bjm820@hotmail.com
Green Committee	Jim Hickey	703-321-8535	
Membership & Communications	Elissa Myers	703-626-9087	

SPECIAL COMMITTEES

Entrance Committee	Margaret Kinder	703-764-9576	
Hospitality	Ruth Hartman	703-321-8063	hospitality@ravensworthfarm.org
New Neighbors	Cindy Cho		choc64@gmail.com
Directory	Coordinator Advertising	Stephen Beste VACANT	703-321-9110 directory@ravensworthfarm.org
Farmer	Farmer Editor Preparation Advertising, Flyers Distribution Advertising	Shobha McConnell Susan Deyampert John Ritchie Vince DeCoursey Katherine Craig	703-973-8994 703-321-3150 703-321-8427 703 850-9392 703-321-3149 ravensworth.farmer@gmail.com treasurer@ravensworthfarm.org rdecourseyjr@verizon.net ads@ravensworthfarm.org
Community Organizations			
PTA President, Ravensworth ES	Megan Farinholt		president@ravensworthpta.org
Pool President	Dan VanBrunt		president@ravensworthfarmpool.com
Green Thumb Garden Club	Karen Aftergut		

Association Meetings & Deadlines 2021-22

MONTH	BOARD MEETING/FARMER DEADLINE/FLYERS DUE	<i>Farmer</i> DELIVERY	EVENTS
February	2	26/27	
March	2	26/27	March 24 - General Membership Meeting
April	13	May 7/8	
May	4	21/22	May 19 - General Membership Meeting

All meetings are open to residents of Ravensworth Farm. Unless noted otherwise, all meetings are 7:30pm online. Contact Diwakar Sharma, Corresponding Secretary, at CorSec@ravensworthfarm.org for a link to join.

Con't from Pg. 1

- 5417 Inverchapel
- 5425 Inverchapel
- 5514 Inverchapel
- 5622 Inverchapel
- 5646 Inverchapel
- 5303 Moultrie
- 5311 Moultrie
- 5315 Moultrie
- 5414 Moultrie
- 5408 Nutting
- 5305 Oldcastle
- 7816 Penley
- 5504 Ravenel



Holiday Greetings to our neighbors from those that helped in judging:

- Happy Holidays!
- Thanks to all who made our neighborhood more festive with all of the beautiful displays - you are all winners!
- May the holiday bring great peace to all your families and great happiness to face the New Year! Merry Christmas to all!
- What a spectacularly bright and loving community! Merry Christmas and thanks to all who make this such a special place to live! And special thanks to the family who decorates Kelly's Place at the pool - best ever this year!

Hopefully, you had a chance over the holidays to take a spin around the neighborhood to enjoy all the lights!

RAVENSWORTH ES NEWS

In late December you may have noticed some activity on the field behind the school. Thanks to a collaboration between the Fairfax County Park Authority and Braddock Road Youth Club (BRYC) we are getting a new field behind the school. Premier Sports Fields will spread 44,000 square feet of compost and topsoil, laser grade and either lay sod or aerate/seed the field. BRYC will keep the field watered during this process. We are looking forward to having an updated play area for our school!

Erika Aspuria
Principal
Ravensworth Elementary School
#RavensWorth

KIDS' CORNER

Kids' Corner is a place where Ravensworth kids 18 and under can have their writing and art published for all of Ravensworth Farm to see. Send your submission of 500 or fewer words or black and white art (high resolution file) to Ravensworth.Farmer@gmail.com. Be sure to include your name and where you live (your address won't be published). All genres appropriate for a general audience are welcome.



Jubilant Tots

- ◆ Warm and Caring
- ◆ Safe and Affordable
- ◆ Nutritious Meals and Snacks
- ◆ Arts and Crafts, Pre-School Curriculum
- ◆ Fun Outdoor/Indoor Activities
- **County Certified**
- **CPR and First Aid Trained**
- **MAT Certified**
- **Great references from the neighborhood parents**
- **Experience with varied ages**

- ◆ Ages: Newborn- 5 yrs.
- ◆ Hours: 7:30-6:00
- ◆ Full or Part time and Drop Ins are Welcome

Shringar Rana
571-338-3958
ravensworthome@gmail.com



No Registration Fee !!
for our neighbors !!!

NEARLY SIX DECADES LIVING AT RAVENSWORTH'S SUMMIT

By Rob Blizard

A resident of Ravensworth Farm at the top of the hill on Ellet Road since July 1963, Kathleen Houck moved to our neighborhood with her husband Tony and three children (at the time) in search of a larger house. The family was living in Falls Church and the couple was building a house in Vienna but determined that the house was going to be too small as construction was finishing up and decided to look elsewhere. A bigger house was a wise choice as Kathleen and Tony ultimately had five children: Debra, James, Stephen, Carol, and Michael.

Before moving to the Farm, Tony's work required him to travel to Springfield on occasion and he was then assigned there on a permanent basis. Through his job, he learned of the new Ravensworth subdivision. The couple looked at empty lots on Inverchapel Road and Ellet Road but chose to live at the peak of the Ellet hill. From what they call their "perch," they had western views of the back of Ravensworth Elementary, including the fields and playground. To the south, they could see the train trestle at Lake Accotink and watch trains travelling back and forth during the day. Over the years, these views were replaced by tree canopies.

Upon moving into Ravensworth, Braddock Road was a two-lane road beyond the King's Park shopping center. Police directed traffic in the morning and afternoon at the intersection of Port Royal Road and Braddock prior to installation of a traffic light. Also at that time, the Beltway was only two lanes in both directions and stopped at the Braddock Road exit without continuing on to Shirley Highway. It would be widened in the early and mid-1970s.

Central Springfield at the time was not nearly as developed as it is now. For many years, the Houck family would watch Fourth of July fireworks set off in an empty field that is now Springfield Plaza. At the corner of Commerce Street and Backlick Road, there was a giant slide that many families enjoyed.

For shopping and occasional eating out, the family would drive to Seven Corners and the heart of virtually undeveloped Ballston in Arlington, which had one shopping center then referred to as Parkington, as well as Silver Spring and Rockville. The malls at Landmark and Springfield came later, and local fast-food eateries then sprang up in Springfield, Annandale and elsewhere.

Kathleen remembers Burke Lake Road as a two-lane thoroughfare in the center of Burke that crossed over the railroad tracks before the current realignment of the road that bypasses the center of Burke proper. In addition, Old Keene Mill Road headed west from Springfield as a two-lane road. Rolling Road was also only two lanes with a single-car bridge where it crosses over the railroad tracks near the Interstate Van Lines facility. Originally, Ravensworth kids were sent to West Springfield High School, so school buses had to go down Burke Lake Road to Burke Road to Rolling Road to bypass the bridge as buses were too heavy to cross. This situation was rectified when a new bridge was built in 1970.

The Ellet Road summit had many multi-children families who always were outside riding bikes, playing football or tag, and hanging out in the evening on the corner under the street light. Sledding was a fun winter activity going from the top of the hill down the steep drop to the bottom of Ellet. Apparently, with the right snow conditions, children could get pretty far downhill since many families then had only a single car and the street was mostly clear.

Kathleen served as a Girl Scout leader for her youngest daughter for several years and chauffeured children to and from activities that included Boy Scouts, Girl Scouts and various sports such as baseball, soccer, football and bowling.

As the family grew to five children, Kathleen and Tony would occasionally look at newer homes in Canterbury Woods, Kings Park West, and Fairfax. They always ended up deciding against a move and instead added additional bedrooms, a bathroom, and a family room. Almost sixty years later, Kathleen reports now that the sense of community and the neighborhood's location were factors that led the family to stay in Ravensworth



Ravensworth Farm's
Appreciation Day
EVERY TUESDAY

Present this flyer AT Kilroy's and get 20%
off your total purchase

Not valid with other offers or discounts

Dine in only

Not valid on Happy Hour Specials

Not including alcohol

5250 Port Royal Rd. Springfield, Va. 22151

703-321-7733

TROOP 991 - WREATHS ACROSS AMERICA

On December 18th, members of Troop 991 and families participated in the Wreaths Across America by helping to place wreaths on the gravestones at the Alexandria National Cemetery to honor those who made the ultimate sacrifice to our Nation.



Members of Troop 991 and families participating in the Wreaths Across America at the Alexandria National Cemetery.

Troop 991 is accepting new members! Boys must be in the 5th grade or 11 years old, but not older than 18! We meet most Wednesdays (first 3 of the month) at the Community of Christ Church on Inverchapel road and are a very active troop. Contact Scoutmaster Bill Thewes at William.Thewes@gmail.com to learn more.

Troop 991 would also like to express our appreciation to the members of the Community of Christ Church for supporting the scouts by allowing us to meet and use their facility. Thank you for being a great part of this community and supporting our youth!

WHAT IS A WATERSHED?

By Lisa Reynolds

Is a watershed the same thing as an outhouse? Although they sound similar, they are very different.

A watershed, also known as a catchment or drainage basin, is an area of land where all of the rain and snow that falls on it drains to the same place. [For those who may not know - an outhouse is a separate building with a toilet but no plumbing.] Water flowing through a watershed can carry nutrients, chemicals, and eroded soil to local waterbodies.

Ravensworth Farm is located in the Accotink Creek Watershed. Although Lake Accotink is probably the most familiar water feature in the watershed, there are other waterbodies within the 51-square mile area. Ultimately, the watershed drains to Accotink Bay, then Gunston Cove, and, finally, the Tidal Potomac River, which is part of the Chesapeake Bay watershed. Activities that occur within the watershed have the potential to impact water quality because water that runs off the streets and land flows into storm drains that are connected to natural water bodies in the watershed. None of this water receives any treatment to remove pollutants or chemicals.

Con't Pg. 8

Con't from Pg. 7

Some common activities that can impact water quality include car washing, lawn maintenance, pet waste, and snow removal.

Commercial car washes have less impact on the environment because they cannot discharge water to storm drains and must discharge to a sanitary sewer which carries the water to a wastewater treatment plant. Car washes often recycle wastewater and have more efficient high-pressure nozzles that use less water. Handwashing at home can release dirt, oil, exhaust fume residue, and soap or detergent into storm drains and the watershed. These can have a negative impact on wildlife and aquatic life. The impact from handwashing can be reduced by using non-toxic, biodegradable soap that is free of phosphates, chlorine, and petroleum-based ingredients. Dirty water in wash buckets should be dumped in a sink or toilet and not on the driveway, sidewalk, or street. Fairfax County requires fundraiser car washes to use biodegradable, phosphate-free, water-based cleaners.

Synthetic fertilizer, herbicides, and pesticides commonly used on lawns and in gardens, can degrade water quality. Excess nitrogen and phosphorus in fertilizer can runoff into waterways and cause algae blooms. Decomposition of dead algae removes oxygen from water, making it difficult or impossible for fish and other aquatic life to survive. Similarly, pesticides and herbicides intended to kill bugs and unwanted plants can wash into creeks, streams, and lakes, poisoning fish and aquatic plants. Organic alternatives, such as manure, are better for the watershed and are readily available in the DMV.

Pet waste, like fertilizer, contains high amounts of nitrogen and phosphorus, which can increase the growth of algae and reduce the amount of oxygen available in water bodies. Pet waste is also a significant source of pathogens like fecal coliform, a disease-causing bacterium. Pet waste should be bagged and put in the trash or flushed down the toilet. It should not be put in a storm drain since they flow directly to local waterways without treatment.

Rock salt (sodium chloride) or ice melt (a mixture of sodium chloride, magnesium chloride, and other chemicals) are frequently used to prevent icing of sidewalks and driveways. Salts on these surfaces are washed into storm drains, creeks, and rivers and increase the concentration of chlorides in the Potomac River and the Occoquan Reservoir, two of the region's drinking water sources. Higher salinity in surface water bodies can be harmful to fish and other aquatic life. There are several ways to reduce salt's impact on the watershed. Shovel snow from pavement before it turns to ice, use salt only after snow has been cleared and only in areas needed for safety. Minimize how much salt you use. A 12-ounce coffee mug is enough for a 20-foot driveway or 10 sidewalk squares. Salt is not effective at temperatures below 15° F, so use an alternative product like sand or bird seed. Any salt remaining after the ice melts can be swept up and stored for future use.

For more information, check out:

<https://www.usgs.gov/news/science-snippet/earthword-watershed>

<https://www.fairfaxcounty.gov/publicworks/stormwater/accotink-creek-watershed>

<https://www.fairfaxcounty.gov/publicworks/stormwater/car-washing-right-way>

<https://www.scientificamerican.com/article/how-fertilizers-harm-earth/>

<https://www.alexandriava.gov/uploadedFiles/tes/info/PetWaste.pdf>

<https://www.fairfaxwater.org/winter-salt>

COLUMNISTS & WRITERS WANTED

Are you a writer or wanna-be writer? Do you have information to share on a regular or semi-regular basis? Join the "staff" of The Ravensworth Farmer and share your expertise or information with the other 856 homes in our neighborhood via the only medium they all receive- The Ravensworth Farmer. Email Shobha McConnell at ravensworth.farmer@gmail.com.

WHY JOIN THE CIVIC ASSOCIATION?

Your \$15 membership (what a bargain!) helps cover the cost of writing, printing, and delivering this newsletter to all 858 homes in Ravensworth Farm eight times per year.

It also covers the cost of updating and printing the Ravensworth Farm Community Directory each year. The Directory is only available to members. In addition to providing the names, addresses and phone numbers for your neighbors (so you'll know where to go to pick up those items being offered on the Ravensworth Farm Facebook page), the Directory also provides you with emergency numbers (for when your internet is dead), and useful non-emergency numbers. It contains the history of Ravensworth Farm and other historical information. It even contains contact information for youth looking to work! If you need a teen to babysit, pet sit, shovel, rake, or wash your car, just \$15 gets you a copy of this coveted list. In addition to The Ravensworth Farmer and the Ravensworth Farm Directory, the Civic Association also funds:

- three informative general meetings per year,
- community-wide Fall Festival,
- holiday decoration judging,
- summer picnic/BBQ/bash,
- maintenance of the plants and signs at the three community entrances,
- donations to the Scouts and the school,
- coordination and advertising of the fall and spring community-wide yard sales,
- community large-trash-items clean-up day every spring, and
- many other activities and community-care needs.

MEMBERSHIP DUES

If you aren't a member, join now by contacting Elissa Myers at 703-321-7590 or elissa@elissamyers.com, or answer the door when your Block Captain comes knocking. It would be great to welcome every one of our 858 households into the Civic Association!



R. K. MORRIS
Painting
Contractors
Inc.

Small Jobs Welcome *Free Estimates*

PAINTING & REMODELING

Complete Services For:

- Interior & Exterior Painting • Kitchens & Bathrooms
- Wood Replacement • Trim & Crown Molding
- Finished Basements • All Flooring
- Wallpaper Removal • Handyman Services

Licensed & Insured  



703-987-7139

**R & M
CLEANING
SERVICES**



- RELIABLE
- EXPERIENCED
- GOOD REFERENCES
- FLEXIBLE SCHEDULING
- REASONABLE RATES

WE BRING OUR OWN EQUIPMENT

*Free In-home Estimate
Weekly/Bi-weekly/Monthly or Occasionally
Move-in or Move-out Office*

**Call MARYEN or RAUL at
(703) 321-5335**



WorkAway™
SOLUTIONS

FREE
DAY
PASS

**Need a break from
your home office?**

**Come on over,
your first day
is on us.**



**Flex Office
Coworking
Meeting Rooms**

8001 Forbes Pl #211 (off Port Royal Rd)
workawaysolutions.com



Community of Christ

**Experience a
Ravensworth
community church
where all are welcome.**

5610 Inverchapel Road, Springfield, VA
(571) 281-8424 (church)

Pastor Team:
David Condit, Deb Van Heest, Laura Evers

Sunday Services:
11:00a.m. Worship Service

Look to us for year-round community events!

Follow us on Facebook @springfieldcofcongregation

www.CofChrist.org
communityofchristpastorteam@gmail.com

**"I CAN GET IT WORKING AGAIN
OR
FIND YOU A BETTER USED MACHINE"**



Tune-ups: \$79.99 plus parts
(Lawn Tractors \$155.95 plus parts)

Lawn Mowers - Lawn Tractors
Weed Eaters - Power Washers
Chain Saws
and much more

**Bryant's Lawnmower Repair
And Tune-ups**

18 years experience

5532 Queensberry Avenue
— In Ravensworth Farm —

Call Coey Bryant 571-244-5760

THE ETYMOLOGY OF STREET NAMES IN RAVENSWORTH FARM

By Roberto Bernate



Figure 1: Ravensworth Farm & Environs, 1904 Baist's Map, Library of Congress.

Pondering current sensibilities of the Civil War, Ravensworth Farm has multiple street names commemorating Confederate events, battles, or “notable” persons.

Particularly, Mary Anna Randolph Custis Lee - wife of Robert Edward Lee (General in Chief of the Armies of the Confederate States) - sought refuge for a month at the Ravensworth Mansion at the outset of the Civil War, leaving at her husband's behest citing endangerment to her and the Fitzhugh family, relatives, and owners of the property.

The Ravensworth Farm Subdivision was constructed between 1959 and 1965. It is bounded by: Braddock Road (VA 620) to the north; the Capital Beltway (I-495) & Flag Run to the east; Accotink Lake to the south and Accotink Creek to the east.

Carl Hellwig, founder of Springfield Surveys, was a prominent surveyor in the area since 1951. He was a Washington, DC native of German descent (this becomes germane in street naming) and an ardent Civil War enthusiast who surveyed the development and designed the layout and naming of the streets.



CARL H. HELLWIG

Adair Lane – In Adair County, Missouri, the Battle of Kirksville led to a Union Victory securing western Missouri for the north.

Figure 2: Carl Hellwig - *The Old Dominion Surveyor* Vol. III, No. 3, November 1967, p.3.

Bullock Lane – Commander James Dunwoody Bulloch (Bullock) was a native of Savannah, Georgia who worked first as a US naval officer and subsequently as the primary liaison for the Confederate States of America (CSA) from his adopted home base in Liverpool, England providing vital naval logistical intelligence for Union naval blockade running to earn solid currency for the CSA. Bulloch was later implicated as a logistical conspirator in the nascent plot to kidnap President Lincoln which evolved into the assassination and subsequent grievous wounding of Secretary of State William Henry Seward and two of his sons.

Carrick Lane – Considered to be a minor skirmish, The Battle of Carrick's (Corrick's) Ford in 1861, ended with a Union victory which thrust Major General George Brinton McClellan into command of the Army of the Potomac.

Drayton Lane – Thomas Fenwick Drayton was a career military officer. A graduate of West Point where he was a classmate and friend of the future Confederate President Jefferson Davis. After Secession he left the US Army as a Second Lieutenant and was given the rank of Brigadier General in the Confederate States Army and given command of the Port Royal Military district in South Carolina. He also commanded Drayton's Brigade at the battles of Second Manassas, South Mountain, and Antietam. Drayton had a brother, Percival, who served as a Union naval officer during some of the same campaigns.

Con't Pg. 14

Call **Crowley** for all your **plumbing (and HVAC) needs**

Jim Crowley Master Plumber

We Are Now Performing HVAC Service!

We Do Furnace and Air Conditioner Repairs, Seasonal Check-Ups, and Full System Replacements.

Our HVAC Mechanic Has Over 30 Years Experience With Commercial & Residential HVAC.

SAVE \$50*

No travel charge
for customers in
Ravensworth Farm

* Applies to first visit only



Call Crowley for all of your plumbing (and HVAC) needs.

(571) 329-3226

7715 Erie Street, Annandale, VA 22003 • Licensed & Insured

MEET YOUR NEIGHBORS - BE A BLOCK CAPTAIN

Block captains deliver pre-paid Directory orders and sign up new Civic Association members and deliver Directories on the spot. Forty of your neighbors volunteered last year. However, many streets didn't have active block captains so membership was down- resulting in a significant reduction in budget for Civic Association activities. Sign up for a block near you or be adventurous and visit the other side of the neighborhood! Contact Elissa Myers to be a block captain- 703-626-9087 or elissa@elissamyers.com.

NEW NEIGHBORS

New folks move in all the time. If you have new neighbors, tell Cindy Cho. If you are a new neighbor- welcome! Please let Cindy know you have arrived so that one of her New Neighbor Committee members can stop by with information and some goodies. Cindy Cho (choc64@gmail.com)

YOUR INFORMATION NEEDED

Please send along the address (and name, if you know it) for new neighbors, new babies, or deaths. New neighbors' names (adult or infant) will only be reported in The Ravensworth Farmer with their permission. If you are a new neighbor and haven't received a visit from Cindy Cho of the New Neighbor Committee, please let her know you are here at choc64@gmail.com.



CLASSIFIED ADS may be placed in The *Farmer* at no cost to Ravensworth Farm residents. Classified ads may be placed by sending them to rfcafarmer@ravensworthfarm.org or to PO Box 1733, Springfield, VA 22151. The classified ad section is a service to Ravensworth residents and is not intended for business or commercial use. Ads for house sales, commercial services, etc. will be run in this section once. If you wish to repeat your ad, you will need to purchase advertising in The *Farmer*.

<p>DECORATED CAKES</p>	<p>Teen Farmer will decorate cakes or cupcakes for your event or party or just for fun. One to five dozen cupcakes or one to three cakes per event. Advance notice necessary to work it in around school. Text or call Rebekah at 703-321-8757 with questions or to receive a link to cake albums.</p>
<p>DONATIONS ACCEPTED</p>	<p>Good condition used clothes, baby gear (not cribs), and small, useful kitchen items for Immanuel's Hope and good condition clothes, winter outerwear, new socks, and small toiletries for Central Union Mission in DC. Drop off at Immanuel Bible Church lobby (Braddock Rd entrance #1) or the Ortiz home in Ravensworth Farm. Ortiz Family – 571-331-9138</p>
<p>WANTED</p>	<p>Good used furniture for needy low income families in the Annandale Area. Needed are beds (no kings), dressers, kitchen tables & chairs, sofas (under 84 inches), love seats, end tables, lamps, sheets, blankets, pillows, working flat TVs and microwaves and 9x12 clean rugs. (No sleep sofas.) Contact Annandale Christian Community for Action for pick up by emailing Bill Sinclair at billsinclair2@verizon.net or Mary Lee Dispirito at ddmld@verizon.net.</p>

Con't from Pg. 11



Figure 3: St. Louis Globe-Democrat, St. Louis, Missouri, Fri, Jul 06, 1951 - Page 2.

Inverchapel Road – Likely named for the first and only Lord Inverchapel. His death was near the timeframe that the Ravensworth Farm streets were being developed.

Ellet Road – Brigadier General Alfred Washington Ellet was commander of Union ram fleets. The Ellet name was renown in naval circles as Ellet's brother (Charles Ellet Jr.) brother, nephews (Charles Rivers Ellet & John Alfred Ellet), and son (Edward Carpenter Ellet) all were prominent naval officers. The naval destroyer USS Ellet (DD-398) which served during World War II was named in their honor.

Foote Lane – Most notably, Commodore Andrew Hull Foote was the commander of a naval fleet successfully defeating the Confederates at the Battle of Fort Henry 1862. This was the first Union victory of U.S. Grant's Western Campaign.

Forbes Place – Edwin Forbes was a painter who traveled alongside Union troops during the Civil War and depicted "common life" among soldiers.

Gosport Lane – Gosport Naval Shipyard, renamed Norfolk in 1862, is the oldest naval shipyard – during the early months of the Civil War, the Union Navy was forced from the site by the Confederacy. Subsequently, Union naval command ordered the destruction and scuttling of the remaining ships there. Notably, the ironclad USS Merrimack, which was partially burned in drydock but salvaged by the Confederacy and renamed the CSS Virginia - the first steam-powered ironclad warship produced by the South.

Halleck Lane – Major General Henry W. Halleck ("Old Brains") succeeded Major General George McClellan and preceded General of the Army U.S. Grant as Commanding General of the United States Army.

Hatteras Lane – Forts Hatteras and Clark were key CSA port entries from the Outer Banks in North Carolina and became an early urgent target for Union forces as these were key naval strongholds allowing CSA blockade running through Hatteras inlet. By August 1861 a short but pivotal bombardment began with the Union shelling of Fort Clark – leading to its abandonment to Fort Hatteras where after brief union shelling, CSA surrendered the fort.

Juxon Place – Possibly a reference to William Juxon who was the Archbishop of Canterbury, leader of the Church of England in the 17th Century. No other significant reference can be identified.

Kepler Lane – Charles Kepler, a native of Mount Vernon, Iowa, was a Civil War veteran of battles such as Atlanta, Shiloh, and Vicksburg who went on to promote veteran's issues for the remainder of his life.

Moultrie Road – Located to the north of Fort Sumter across the entrance to Charleston Harbor, Fort Moultrie during the Civil War was the second fort with this namesake; named for Revolutionary War General William Moultrie and later governor of South Carolina. It was built during the American Revolution and used in the defense of Charleston, South Carolina. After Secession, the Confederates shelled Fort Moultrie incessantly, but the Commander of the Fort - Major Robert Anderson had already moved the garrison to Fort Sumter in December 1860 just before the opening volley of the Civil War on April 12, 1861. Confederate forces occupied the abandoned fort and used it to shell nearby Fort Sumter.

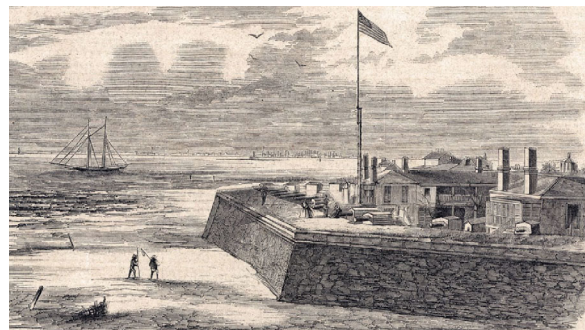


Figure 4: Fort Moultrie - Frank Leslie's Illustrated Newspaper, January 5, 1861, issue (Vol. XI, Number 267).

Con't Pg. 18

Convenient Before & After Hours Pickup

CAPITAL CAR CARE

Complete Automotive Service

Established 1977

7978 Forbes Place

(behind Ravensworth Shopping Center)

703-321-8981

60 Years of Servicing Cars by Three Generations of Sterns

7:30am - 5 pm M-F

“Early bird” drop off

For a FREE estimate, call **703-385-1641**
or visit www.craigslawn.com

Affordable Mowing Services To Meet Your Budget

5th Mow Free Senior Citizen Discount***

CLC
CRAIG'S LAWN CARE
EST. 1985 / LICENSED & INSURED

OTHER SERVICES WE PROVIDE

- Yard Cleanup
- Mulching
- Deseeding of Beds
- Shrub Trimming
- Aeration & Overseeding
- Leaf Removal
- Gutter Cleaning



**Limit one per new customer only for those who sign up for regular service*

***Applies to regular mowing service only*

Because Every Child Should Know How To Swim



KIDS FIRST
Swim Schools
Springfield

RAVENSWORTH SHOPPING CENTER
5238 PORT ROYAL ROAD
SPRINGFIELD, VA 22151
703-321-7946

Con't from Pg. 14

Nutting Lane - Captain Lee Nutting was an infantry officer and Congressional Medal of Honor recipient for actions at Todd's Tavern in Spotsylvania, Virginia in 1864.

Landgrave Lane - A Landgrave was a title specific to German royalty but was later adopted in the Carolina Colonies for people who mostly served in the colonial legislature. No other significant reference can be identified.

Penley Place - Luther L. Penley enlisted in the Confederate North Carolina Infantry and was part of the "Watauga Marksmen," assigned to the CSA, 37th Regiment, North Carolina Infantry, Company B. He died in action in the City of Falls Church in 1862. His picture is one of the most iconic Civil War photos of young soldiers.

Pillow Lane - Fort Pillow was a Confederate fort until 1862 when the Union took control. It sat on the east bank of the Mississippi River on the border of Tennessee and Arkansas. This was the site of the Fort Pillow Massacre where more than 300 Union soldiers, many US Colored Troops (USCT), were killed after surrendering under the Confederate command of Major General Nathan Bedford Forrest.

Port Royal Road - The Battle of Port Royal was one of the earliest amphibious operations of the American Civil War, where a United States Navy fleet and United States Army expeditionary force captured Port Royal Sound, South Carolina.

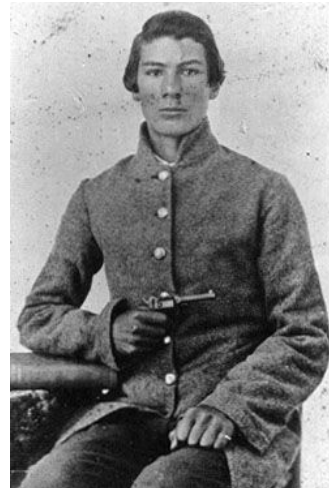


Figure 5: Luther Lee Penley, findagrave.com

Obituaries

C. E. Queensberry
 Clarence Eugene Queensberry, 67, of 225-38th St., Newport News, died Friday afternoon in his home after a year-long illness. A native of Richmond, he had been a resident of Newport News for 50 years. He was retired March 1, 1957, from the electrical department of Newport News Shipbuilding and Dry Dock Co. after 40 years service.

Figure 6: Daily Press (Newport News, Virginia) Saturday 05 Dec 1959, Page 8.

Queensberry Avenue - It is possible Carl Hellwig, with his affinity towards naval topics, saw the timeliness of Queensberry's death to commemorate him with a street name.

Rathbone Lane - Major Henry Reed Rathbone was a Union officer and a Veteran of the Battles of Antietam and Fredericksburg. He succeeded William Henry Seward as US Senator from New York when Seward was appointed as Secretary of State. He is likely best known for being in attendance in the Presidential Box at Ford's Theater. When Lincoln was assassinated Rathbone attempted to apprehend John Wilkes Booth but was severely slashed by Booth but not before Rathbone was able to cause Booth to lose his footing and fall awkwardly from the balcony.

Ravenel Lane - Henry William Ravenel, was an avowed Confederate, botanist, slaveholder, and a South Carolina farmer who maintained a journal on Civil War life in the south that became popular reading after the war.

Ringold Place - The Ringgold Gap Battle was a lopsided Confederate victory that occurred in November 1863. CSA forces were ordered to secure Taylor's Ridge, a critical Confederate resupply line. In the hours-long battle superior Union forces numbering at least 16,000 were held off by a CSA force of only nearly 4,000.

Sedgwick Lane - General John Sedgwick was a Union officer - thrice wounded in action at the Battle of Antietam - who was killed by a sniper in the Battle of Spotsylvania Courthouse in 1863. He was one of the highest-ranking officers killed during the Civil War.

Slidell Lane - John Slidell was a US & Louisiana State Representative, Senator, and diplomat representing the Confederacy to France who was embroiled in the RMS "Trent Affair," where he and another diplomat were taken captive from a British ship sailing to Europe and later released by President Abraham Lincoln.

Con't Pg. 19

Con't from Pg. 18

Woodruff Court - Carle Augustus Woodruff was a Congressional Medal of Honor recipient for actions taken at Newby's Crossing, Virginia and who also saw action at Gettysburg, and Cold Harbor. He was a career artillery officer serving until, at least 1901, eventually rising to the rank of Brigadier General.

In a document presented by the History Commission to the Fairfax County Board of Supervisors (8 December 2020), entitled the "Fairfax County Confederate Names Inventory Report," "notable" was defined as Confederate names used for streets, parks, monuments, markers, schools, cemeteries, and shopping areas. These "notables" were identified and recommendations for removal or renaming, where necessary, were recognized. Only Bullock Lane in Ravensworth Farm was identified as "notable" in the report. Insofar as the renaming of resident streets, Barbara Peters, the Mason District representative on the History Commission was quoted in the "the Annandale Blog (11 December 2020)," "If you've lived on a street for 30 years and didn't know it was named for a Confederate, it's hardly worth getting upset about it now."

FRIENDS OF LAKE ACCOTINK PARK (FLAP) EVENTS & NEWS

VOLUNTEER FOR MONTHLY FLAP CLEAN-UP

Volunteers gather at the Lake Accotink Marina the **second Sunday of every month from 9:00am to Noon** to pick-up trash bags of debris carelessly dumped, dropped and forgotten, refill and check dog waste stations, clip vines and more. Sign in at Lake Accotink Marina. Pick up your gloves, FLAP information, clean-up bags, tools, maps and more. You will also be loaned a FLAP Safety Vest. Volunteer 4 times and receive your very OWN Safety Vest to personalize! It is wise to wear long sleeves, gloves, boots, and long pants.

Register: https://volunteer.fairfaxcounty.gov/custom/1380/#/organization_details/71653

Questions? Contact@flapaccotink.org

CARING FOR THE POLLINATOR GARDEN

WHEN: (2nd Sunday of every month) **TIME:** 10:30am

LOCATION: Lake Accotink Park Margaret Kinder Pollinator Garden, adjacent to the marina

ACTIVITIES: Work alongside FLAP experts as they care for the Pollinator Plants, Watering and Clean-up. Tools and gloves are provided or you can bring your own.

REGISTER: https://volunteer.fairfaxcounty.gov/custom/1380/#/opp_details/186905

<https://www.eventbrite.com/e/caring-for-the-pollinator-garden-at-lake-accotink-Park-tickets-158892889911>

EXPLORING THE POLLINATOR GARDEN

WHEN: (2nd Sunday of every Month) **TIME:** 10:30am

LOCATION: Lake Accotink Park Margaret Kinder Pollinator Garden, adjacent to the marina.

ACTIVITIES: FLAP's experts will guide you through the pollinators and pollinator plants, and how to start and maintain your own (any size) pollinator garden.

REGISTER:

<https://www.eventbrite.com/e/exploring-the-pollinator-garden-at-lake-accotink-park-tickets-158891973169>

FLAP BOARD POSITIONS

FLAP board positions are open- it is YOUR LAKE ACCOTINK PARK! Help make a difference for about an hour a month! Accepting candidates. Email: Contact@flapaccotink.org

DONATE TO FRIENDS OF LAKE ACCOTINK PARK - FLAP

Online: www.flapaccotink.org

Mail: FLAP, P.O. Box 1203 Springfield VA 22151



Ravensworth Shell



SERVICE/REPAIRS



The Washington Area's
Consumer Report Magazine



VA INSPECTIONS



SAFETY INSPECTIONS



GASOLINE & DIESEL

703-321-8280

We are on Your Team
When it Comes to Car Care!

- ✓ *Locally Owned and Operated Since March, 1966*
- ✓ *Complete Automotive Service*
- ✓ *Foreign and Domestic*
- ✓ *Same Day Service (in most cases)*
- ✓ *12 Month/12,000 Mile Guarantee*
- ✓ *Open 7 Days-a-Week for Auto Service, Repairs and Inspections*
- ✓ *Open 24 Hours for Gasoline/Diesel*
- ✓ *Emergency Road Service*



8011 Braddock Road • Springfield, VA 22151 • RavensworthShell.com

In the Ravensworth Shopping Center • Braddock Rd and the Beltway



C.D. SHANAHAN'S
HEATING & COOLING, LLC

Quality and Comfort You Can Rely On

CDSHANAHANS@GMAIL.COM

571 429 0919

\$79 Heating/Cooling Check up



HVAC SERVICES

We've got you covered for all your HVAC needs!



HEATER REPAIR

We'll help you stay warm in the winter months.



HVAC REPAIR

Don't let the outer elements get to you. Call today for professional HVAC repair services.

Check us out on Yelp!



★★★★★ 27 reviews
Response time: 20 minutes
Response rate: 95%

Visit our Website!



Check our 5 star Google Reviews!



Verified Customer Reviews
★★★★★

ODD-JOBS, YARD WORK, AND MORE

If you're looking for a bit of help around the yard or house or someone to walk your dog, remember to check the Youth Services listing in the Ravensworth Farm Directory. It contains a list of your younger neighbors who would like to help out and earn some money, too. Kids 12 and up, if you would like to be included in the Youth Services section of next year's directory, email directory@ravensworthfarm.org with a parent's phone number and in which categories you would like to be listed.

ADVERTISE IN THE RAVENSWORTH FARMER

Reach more than 856 homes with news of your services or merchandise seven times over the 2021-2022 year. Contact Katherine Craig at ads@ravensworthfarm.org for information on permanent ads in the body of The Ravensworth Farmer.

To put an insert ad in the Ravensworth Farmer, drop off at least 870 copies of your full page ad along with a check made out to "Ravensworth Farm Civic Association" for \$50 and we will put it in the next month's newsletter. Please drop off the inserts and your check at 5406 Inverchapel Rd., Springfield, VA 22151.

"GEM" REVIEWS

The Ravensworth Farm Community Association board wants to encourage neighbors to share great ideas with neighbors. Whether it's an eatery, theater, tool, park, repair place, preschool, or builder, if you've found a "gem"... please share. Send reviews to rfcafamer@ravensworthfarm.org. Thanks for sharing!



Picture Your Ad Here!
Contact
ads@ravensworthfarm.org
for ad sizes and rates.

DEBBIE
DOGRUL
ASSOCIATES
LONG & FOSTER REAL ESTATE

*The Dedication, Diligence and Attention to
Move You Forward.*



*Contact us today to find out why Team DDA is
the area's leading Realtor® of choice.*

(703) 425-3582 TeamDDA.com

  **@DDARealEstate**

Serving Northern Virginia Since 1989!

Ravensworth Farm Pool Register Today!

CUSTOMER TESTIMONIALS

"I love this pool. The community is warm and welcoming and the kids have made lifelong friends here, as have I" - Heidi

"We joined the pool in 2010/11. We absolutely love being members there. They have a phenomenal swim and dive team, excellent lifeguards, and a wonderful pool compound. There are also wonderful activities held throughout the swim season. You feel like you're a part of a family. We are sad every time it closes for the season, but eagerly look forward to opening day!" - Lisa

"I drove past your pool and the pool and grounds look amazing! We have 4 kids so we wanted to have a nice playground and grounds. Most of the others we drove to see were not nearly as nice as yours!" - Paige

Submit your testimonial by emailing membership@ravensworthfarmpool.com

We love our pool ♥ the kids have so much fun! -Sheilait



- ✓ **Swim Team**
- ✓ **Dive Team**
- ✓ **Learn to Swim Program**
- ✓ **Playground**
- ✓ **Mushroom Kiddie pool**
- ✓ **Snack bar**
- ✓ **Volleyball Courts**
- ✓ **BBQs**
- ✓ **Fun activities all summer long!**



Questions?

Contact Jennifer Auble at
Membership@ravensworthfarmpool.com