



MANDOR HOUSE 1796-1925
RAVENSWORTH PLANTATION, VA.

*The Official Publication of the Ravensworth Farm Civic Association, Inc.
Springfield, Virginia*

November 2022

The Ravensworth *Farmer*

Issue 2

LETTER FROM THE EDITOR



HELP WANTED: FARMER DELIVERY

The RFCA continues the search for a few organizations interested in delivering the Farmer to every house in the neighborhood (8 issues between September - June). **If your organization would like to take part in this paid service opportunity (\$150 per issue) or if you are a student interested in volunteering for service hours, please contact: ravensworth.farmer@gmail.com**

NEWS FROM RAVENSWORTH ELEMENTARY

We are so excited to bring back field trips and assemblies this school year. Our grade 3 students visited the National Zoo and our grade 4 students enjoyed a trip to the Kennedy Center to hear the National Symphony Orchestra. Some of our students also had the opportunity to hear the United States Marine Strings perform. More trips and assemblies are being planned. We are thankful to our Parent Teacher Association (PTA) for their monetary support for assemblies and field trip buses.

Erika L. Aspuria
Principal Ravensworth Elementary School
#RavensWorth - Our Ravens are Worth it!
(703) 426-3600

THIS ISSUE:

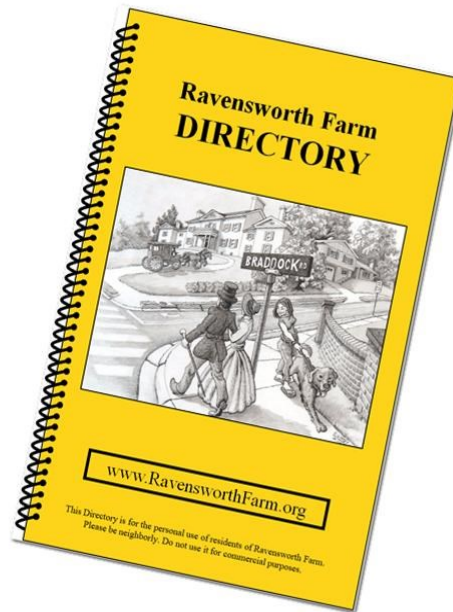
- News from Ravensworth Elementary
- Order the New Ravensworth Farm Directory, Pg. 2
- Association Meeting & Deadlines, Pg. 5
- Garden of the Season, Pg. 5
- Benefit Corporations, Pg. 6
- Help with Heating, Pg. 8
- Classifieds, Pg. 13
- Discovering Our Nation's First Monuments, Part VI: The Southeast Line, Pg. 14



Article I, Section 3, of the Civic Association's By-Laws provides that the Association shall be strictly non-partisan, non-political, and non-sectarian. Accordingly, the invitation of elected officials and other public figures to speak at Association meetings, and the inclusion of paid political or commercial advertisements in the Farmer or in the attached flyers, do not constitute endorsements by the Association.

Order

the new
Ravensworth Farm
Directory



Join the Ravensworth Farm Civic Association and have the new Directory delivered to your door. No need to wait for the block captain to find you at home.

By Mail

- Tell us your street address (we know you're in Springfield)

_____ <i>house number</i> <i>street name</i>

- Write a check for **\$15** (no cash)
to **RFCA**
- Mail the **check** and **this form** to:

Steve Beste 7814 Penley Pl. Springfield, VA 22151

When will I get my directory? Your choice:

- Best: Pick it up at the school on voting day, Nov 8th.
- Or, someone will deliver it to your door.



**Ravensworth Farm's
Appreciation Day
EVERY TUESDAY**

Present this flyer AT Kilroy's and get 15%
off your total purchase

Not valid with other offers or discounts

Dine in only

Not valid on Happy Hour Specials

Not including alcohol

5250 Port Royal Rd. Springfield, Va. 22151

703-321-7733

RAVENSWORTH FARM CIVIC ASSOCIATION

P.O. BOX 1733, SPRINGFIELD, VA 22151

EXECUTIVE COMMITTEE

President	Marcie Winitt	703-678-9074	prez@ravensworthfarm.org
1st Vice President	John Ritchie	703-321-8427	vp1@ravensworthfarm.org
2nd Vice President	Richard Hildebrand		vp2@ravensworthfarm.org
Recording Secretary	Ginger Rogers	703-321-1151	recsec@ravensworthfarm.org
Corresponding Secretary	Diwakar Sharma	571-314-2400	corsec@ravensworthfarm.org
Treasurer	Kristoffer Hull	703-517-8471	treasurer@ravensworthfarm.org

STANDING COMMITTEES

Schools & Education	Jill Mowbray	703-865-8368	bjm820@hotmail.com
Green Committee	Jim Hickey	703-321-8535	
Membership & Communications	Elissa Myers	703-626-9087	

SPECIAL COMMITTEES

Entrance Committee	Margaret Kinder	703-764-9576	
Hospitality	Ruth Hartman	703-321-8063	hospitality@ravensworthfarm.org
New Neighbors	Cindy Cho		choc64@gmail.com
Directory	Coordinator	Stephen Beste	703-321-9110 directory@ravensworthfarm.org
	Advertising	Sue Hillmer	703 282-3964 suehillmer@earthlink.net
<i>Farmer</i>	Farmer Editor	Shobha McConnell	703-973-8994 ravensworth.farmer@gmail.com
	Web Design/Format	Roberto Bernate	703-244-7460 roberto.bernate@gmail.com
	Advertising/Flyers	John Ritchie	703-321-8427 vp1@ravensworthfarm.org
	Distribution	VACANT	
	Advertising	Sue Hillmer	703 282-3964 suehillmer@earthlink.net
Community Organizations			
	PTA President, Ravensworth ES	Megan Farinholt	president@ravensworthpta.org
	Pool President	Dan VanBrunt	president@ravensworthfarmpool.org
	Green Thumb Garden Club	Karen Aftergut	

Please help fill these open positions with the RFCA!



**Recording Secretary
Distribution for The Farmer**

**Please contact Marcie Winitt (prez@ravensworthfarm.org)
for additional information
or to volunteer.**

Association Meetings & Deadlines 2022-23

MONTH	BOARD MEETING/FARMER DEADLINE	EVENTS
November	2	
December	7	
January	4	
February	1	
March	1	March 23 - General Membership Meeting
April	12	
May	3	May 25 - General Membership Meeting

All meetings are open to residents of Ravensworth Farm. Unless noted otherwise, all meetings are 7:30pm online. Contact Diwakar Sharma, Corresponding Secretary, at CorSec@ravensworthfarm.org for a link to join.

GARDEN OF THE SEASON

Happy Fall, Y'all

Gardens of the Season were selected on Tuesday, October 11. As you walk and drive through the 'Farm' take time for a detour. You will be treated to some inventive landscaping and gorgeous autumn colors. Neighbors are beginning to use more native plants while reaping the benefits of less pesticide use and more drought-tolerant plants.

First Place:



5311 Moultrie Road
Bruce & Debbie
Mahen

Second Place:



5227 Kepler Lane
Carlos and Maria
Santizo

Third Place:



5505 Moultrie Road
Pauline Wang

Honorable Mention:

8127 Carrick Lane	8145 Halleck Place	7906 Hatteras Lane	7909 Hatteras Lane
5604 Inverchapel Rd.	5622 Inverchapel Rd.	5521 Moultrie Rd.	5305 Queensberry Ave.
5645 Ravenel Lane	5600 Sedgwick Lane	7916 Slidell Lane	

There are also some wonderfully whimsical Halloween tableau vivant. If you have youngsters you may wish to Trick or Treat accordingly!

Margaret Kinder, Green Thumb Garden Club

BENEFIT CORPORATIONS

BY LISA REYNOLDS

Many of you will be starting your holiday shopping soon. If you're someone who tries to be mindful about your purchases, you should be aware of benefit corporations. Most of us are familiar with USDA organic labeling and have probably seen the U.S. Green Building Council's LEED (Leadership in Energy and Environmental Design) certifications on buildings.

But this logo may be less recognizable. A benefit corporation is a legal tool that allows corporations to focus on stakeholder governance before maximizing shareholder value. "A benefit corporation is a traditional corporation with modified obligations, committing it to higher standards of purpose, accountability, and transparency."¹

Benefit corporations commit to create benefit to society or the environment by operating in a responsible, sustainable manner. In addition to financial return for shareholders, their boards consider environmental and social factors and provide transparent reporting to stakeholders. Certified B Corporations are similar to benefit corporations. Both require directors to consider impacts on all stakeholders and to publish public reports demonstrating their social and environmental performance. Certified B Corporations must obtain external verification of their performance. Details of the process for becoming a Certified B Corporation can be found at <https://usca.bcorporation.net/benefit-corporation/#>

Certified B Corporations are categorized based on their performance in five impact areas: Community, Customers, Environment, Governance, and Workers.

Back to the shopping! Some recognizable Certified B Corporations are: Patagonia, Bombas, Tillamook, Warby Parker, and Ben & Jerry's! Some less recognizable organizations that are characterized as Best for the World and have the highest verified scores in the five impact areas are:

Con't Pg. 7

Jubilant Tots

- ◆ Warm and Caring
- ◆ Safe and Affordable
- ◆ Nutritious Meals and Snacks
- ◆ Arts and Crafts, Pre-School Curriculum
- ◆ Fun Outdoor/Indoor Activities
- **County Certified**
- **CPR and First Aid Trained**
- **MAT Certified**
- **Great references from the neighborhood parents**
- **Experience with varied ages**

- ◆ Ages: Newborn- 5 yrs.
- ◆ Hours: 7:30-6:00
- ◆ Full or Part time and Drop Ins are Welcome

Shringar Rana
571-338-3958
ravensworthome@gmail.com



No Registration Fee !!
for our neighbors !!!

Con't from Pg. 6

Aether Diamonds (<https://aetherdiamonds.com/>) Diamonds crafted from carbon extracted from the atmosphere

ChopValue Manufacturing Ltd. (<https://chopvalue.com/>) Products made from discarded chopsticks – gaming desks, coasters, cheese boards, charcuterie boards, dominoes, cribbage boards, shelving and office furniture

Bainbridge Vineyards, LLC (<https://www.bainbridgevineyards.com/>) Award-winning white wines grown in the Puget Sound region

HEX Ferments (<https://www.hexferments.com/>) Sauerkraut, kimchi, and kombucha made in Baltimore

Bloomin (<https://www.bloomin.com/>) Seed paper sheets, greeting cards, invitations, stationery, shapes, and gifts for promotions and occasions

Dr. Bronner's (<https://www.drbronner.com/>) Soaps, sanitizers, chocolate (!), lotions & balms, hair care, home & laundry, toothpaste, coconut oil

PRANA Organic (<https://pranaorganic.us/>) Tasty organic and gluten free snacks

Bonterra Organic Estates (<https://www.bonterra.com/>) Organic and biodynamic wines – red, white, rose, bubbly, and boxed

KeepCup (<https://us.keepcup.com/>) Barista standard reusable cups in glass, stainless steel, and bottles

ChicoBag & To-Go Ware (<https://www.chicobag.com/>) Reusable bags, packs, totes, and cutlery designed to replace single-use items

New Belgium Brewing Co, Inc. (<https://www.newbelgium.com/>) Makers of Fat Tire Amber Ale, Voodoo Ranger IPA, Sour Saison, etc. along with apparel and accessories

Rivanna Natural Designs, Inc. (<https://rivannadesigns.com/>) Elegant, planet-friendly alternatives to traditional trophies and plaques made by refugees and others who need meaningful employment located in Virginia

W.S. Badger Co, Inc. (<https://www.badgerbalm.com/>) Skin care products including sunscreen, lip balm, moisturizer, baby care, and aromatherapy

Inesscents Aromatic Botanicals (<https://inesscents.com/>) Soap, body oil, perfume, immune support, and first aid products

NOVICA (<https://www.novica.com/>) Global marketplace for artisan products like jewelry, clothing and accessories, home décor, tableware, and paintings

Uncommon Goods (<https://www.uncommongoods.com/>) Marketplace for unique, artisan products like home décor, art, kitchenware, jewelry, apparel, accessories, beauty & wellness, and toys & games

EarthHero (<https://earthhero.com/>) Marketplace offering only sustainable goods like audio & tech, beauty products, clothing & accessories, baby & kids toys, books & clothing, cleaning products, garden supplies, candles, pet supplies; products, sporting goods, camping equipment, and travel supplies

Lake Champlain Chocolates (<https://www.lakechamplainchocolates.com/>) Truffles, chocolates, hot chocolate mixes, gift baskets, business gifts, vegan chocolates, and branded merchandise

Maybe one or more of these companies will make your shopping easier and give you the gift of feeling good about your purchase.

Source: <https://usca.bcorporation.net/brand-guidelines-for-b-corps/>

¹ <https://usca.bcorporation.net/benefit-corporation/#>

KIDS' CORNER

Kids' Corner is a place where Ravensworth kids 18 and under can have their writing and art published for all of Ravensworth Farm to see. Send your submission of 500 or fewer words or black and white art (high resolution file) to Ravensworth.Farmer@gmail.com. Be sure to include your name and where you live (your address won't be published). All genres appropriate for a general audience are welcome.

COLUMNISTS & WRITERS WANTED

Are you a writer or wanna-be writer? Do you have information to share on a regular or semi-regular basis? Join the "staff" of The Ravensworth Farmer and share your expertise or information with the other 856 homes in our neighborhood via the only medium they all receive- The Ravensworth Farmer. Email Shobha McConnell at ravensworth.farmer@gmail.com.

ADVERTISE IN THE RAVENSWORTH FARMER

Reach more than 856 homes with news of your services or merchandise eight times over the 2022-2023 year. Contact Sue Hillmer at suehillmer@earthlink.net for information on permanent ads in the body of The Ravensworth Farmer.

HELP WITH HEATING BEGINS OCTOBER 11

From the Fairfax County Department of Family Services (DFS) Public Assistance and Employment and Training Division

Source: <https://www.fairfaxcounty.gov/familyservices/older-adults/golden-gazette>

Are you worried about heating bills this winter? The Fuel Assistance Program offsets the cost of primary heating expenses for eligible households. If approved, payments begin in January 2023. The open application period for the Fuel Assistance Program begins on Tuesday, October 11, 2022, and closes on Monday, November 14.

Households can apply in the following ways: **Online:** at CommonHelp.Virginia.gov

Phone: call the Enterprise Call Center at **1-833-522-5582**

Paper Application: call our main number at **703-324-7500** to request an application be mailed to you

Fax: fax a completed application to **703-653-1355**

In Person: applications are available at these Department of Family Services locations:

Annandale - Heritage Center, West Wing, 7611 Little River Turnpike, 5th Floor, Annandale

Fairfax - Pennino Building, 12011 Government Center Parkway, Suite 232, Fairfax

Reston - Lake Anne Office Building, 11484 Washington Plaza West, 4th floor, Reston

Richmond Highway/Alexandria - South County Center, 8350 Richmond Hwy. (Route 1), 4th floor, Alexandria.

YOUR INFORMATION NEEDED

Please send along the address (and name, if you know it) for new neighbors, new babies, or deaths. New neighbors' names (adult or infant) will only be reported in The Ravensworth Farmer with their permission. If you are a new neighbor and haven't received a visit from Cindy Cho of the New Neighbor Committee, please let her know you are here at choc64@gmail.com.

HAVING DIFFICULTY PREPARING MEALS?*(Article from the Department of Family Services)*

The Meals on Wheels nutrition program provides home delivered nutrition services targeted to persons 60 years of age or older as well as younger individuals who may have a disability and are temporarily unable to prepare meals for themselves due to illness or accident. Weekly meals are available for in-home delivery. Priority is given to older individuals with the greatest economic and social need, with special emphasis on low-income minority individuals, older individuals with limited English proficiency, and individuals at risk for institutional placement. The program is targeted to support eligible adults to remain independent in their own homes with support by this program. The meals program currently provides a weekly, contact-free meal delivery of 11 flash frozen meals. Meals are delivered one time per week. Apply by calling the Department of Family Services, 703-324-5409.

ARE YOU ELIGIBLE FOR SNAP?

The Supplemental Nutrition Assistance Program (SNAP) can be used like cash to buy food from authorized retailers and online from Amazon and Walmart but cannot be used for delivery fees. Recipients receive an Electronic Benefit Transfer card. Your account is debited each time eligible food items are purchased. A secret Personal Identification Number is required.

*Small Jobs Welcome**Free Estimates***PAINTING & REMODELING****Complete Services For:**

Interior & Exterior Painting • Kitchens & Bathrooms
 Wood Replacement • Trim & Crown Molding
 Finished Basements • All Flooring
 Wallpaper Removal • Handyman Services

Licensed & Insured

**703-987-7139**

**R & M
CLEANING
SERVICES**



- RELIABLE
- EXPERIENCED
- GOOD REFERENCES
- FLEXIBLE SCHEDULING
- REASONABLE RATES

WE BRING OUR OWN EQUIPMENT

*Free In-home Estimate
Weekly/Bi-weekly/Monthly or Occasionally
Move-in or Move-out Office*

**Call MARYEN or RAUL at
(703) 321-5335**



Community of Christ

**Experience a
Ravensworth
community church
where all are welcome.**

5610 Inverchapel Road, Springfield, VA
(571) 281-8424 (church)

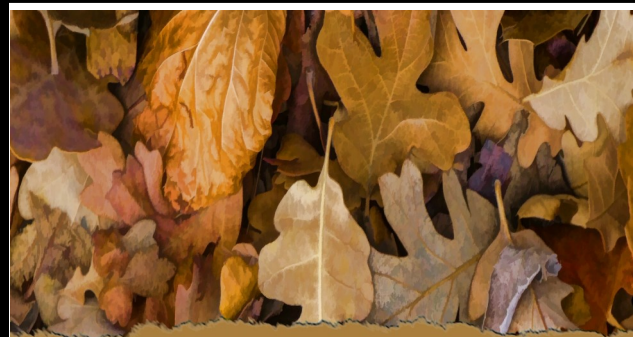
Pastor Team:
David Condit, Deb Van Heest, Laura Evers

Sunday Services:
11:00a.m. Worship Service

Look to us for year-round community events!

Follow us on Facebook @springfieldcofcongregation

www.CofChrist.org
communityofchristpastorteam@gmail.com



Happy Thanksgiving





571-432-7721
tim@paumeninnovations.com

Tim Paumen
Class A Contractor



P.O. BOX 523484 • SPRINGFIELD, VA 22152



ESCAPE TO PRODUCTIVITY WITH US

About Us

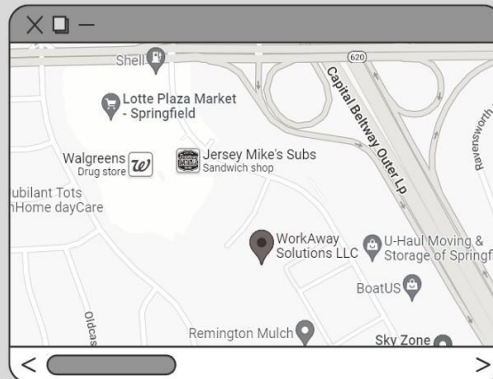
WorkAway Solutions LLC was founded in 2017 to offer the community a place to gather... to work, grow and inspire entrepreneurship and remote work.

Why Choose Us

Locally owned and operated, WorkAway is a work home away from home. Our community is professional, friendly and comfortable for you to work away.

SERVICES

-  **Coworking**
-  **Meeting Space**
-  **Flex Office Space**
-  **Business Mailing Addresses**



**BOOK A TOUR TODAY AT
WORKAWAYSOLUTIONS.COM**

571-336-2091 | info@workawaysolutions.com

8001 Forbes Place, Suite 211, North Springfield, VA 22151

MEET YOUR NEIGHBORS - BE A BLOCK CAPTAIN

Block captains deliver pre-paid Directory orders and sign up new Civic Association members and deliver Directories on the spot. Forty of your neighbors volunteered last year. However, many streets didn't have active block captains, so membership was down- resulting in a significant reduction in budget for Civic Association activities. Sign up for a block near you or be adventurous and visit the other side of the neighborhood! Contact Elissa Myers to be a block captain- 703-626-9087 or elissa@elissamyers.com.

NEW NEIGHBORS

New folks move in all the time. If you have new neighbors, tell Cindy Cho. If you are a new neighbor- welcome! Please let Cindy know you have arrived so that one of her New Neighbor Committee members can stop by with information and some goodies. Cindy Cho (choc64@gmail.com)



CLASSIFIED ADS may be placed in The *Farmer* at no cost to Ravensworth Farm residents. Classified ads may be placed by sending them to rcafarmers@ravensworthfarm.org or to PO Box 1733, Springfield, VA 22151. The classified ad section is a service to Ravensworth residents and is not intended for business or commercial use. Ads for house sales, commercial services, etc. will be run in this section once. If you wish to repeat your ad, you will need to purchase advertising in The *Farmer*.



The WEE Center will be adding more team members this year! Do you know anyone who would enjoy working part-time in our preschool? For more info: WEEdirector@Parkwood.org

ODD-JOBS, YARD WORK, AND MORE

If you're looking for a bit of help around the yard or house or someone to walk your dog, remember to check the Youth Services listing in the Ravensworth Farm Directory. It contains a list of your younger neighbors who would like to help out and earn some money, too. Kids 12 and up, if you would like to be included in the Youth Services section of next year's directory, email directory@ravensworthfarm.org with a parent's phone number and in which categories you would like to be listed.

DECORATED CAKES

Teen Farmer will decorate cakes or cupcakes for your event or party or just for fun. One to five dozen cupcakes or one to three cakes per event. Advance notice is necessary to work it in around school. Text or call Rebekah at 703-321-8757 with questions or to receive a link to cake albums.

DONATIONS ACCEPTED

Good condition used clothes, baby gear (not cribs), and small, useful kitchen items for Immanuel's Hope and good condition clothes, winter outerwear, new socks, and small toiletries for Central Union Mission in DC. Drop off at Immanuel Bible Church lobby (Braddock Rd entrance #1) or the Ortiz home in Ravensworth Farm. Ortiz Family – 571-331-9138

WANTED

Good used furniture for needy low income families in the Annandale Area. Needed are beds (no kings), dressers, kitchen tables & chairs, sofas (under 84 inches), love seats, end tables, lamps, sheets, blankets, pillows, working flat TVs and microwaves and 9x12 clean rugs. (No sleep sofas.) Contact Annandale Christian Community for Action for pick up by emailing Bill Sinclair at billsinclair2@verizon.net or Mary Lee Dispirito at ddmld@verizon.net.

WHY JOIN THE CIVIC ASSOCIATION?

Your \$15 membership (what a bargain!) helps cover the cost of writing, printing, and delivering this newsletter to all 858 homes in Ravensworth Farm eight times per year.

It also covers the cost of updating and printing the Ravensworth Farm Community Directory each year. **The Directory is only available to members.** In addition to providing the names, addresses and phone numbers for your neighbors (so you'll know where to go to pick up those items being offered on the Ravensworth Farm Facebook page), the Directory also provides you with emergency numbers (for when your internet is dead), and useful non-emergency numbers. It contains the history of Ravensworth Farm and other historical information. It even contains contact information for youth looking to work! If you need a teen to babysit, pet sit, shovel, rake, or wash your car, just \$15 gets you a copy of this coveted list.

In addition to The Ravensworth Farmer and the Ravensworth Farm Directory, the Civic Association also funds:

- three informative general meetings per year,
- community-wide Fall Festival,
- holiday decoration judging,
- summer picnic/BBQ/bash,
- maintenance of the plants and signs at the three community entrances,
- donations to the Scouts and the school,
- coordination and advertising of the fall and spring community-wide yard sales,
- community large-trash-items clean-up day every spring, and
- many other activities and community-care needs.

If you aren't a member, join now via RavensworthFarm.org, contact Elissa Myers to become a member - 703-321-7590 or elissa@elissamyers.com, or answer the door when your Block Captain comes knocking. It would be great to welcome every one of our 858 households into the Civic Association!

DISCOVERING OUR NATION'S FIRST MONUMENTS: PART VI - THE SOUTHEAST LINE

BY ROBERTO BERNATE

The forty boundary stones represent or represented, legislation, enacted by the 1st United States Congress and subsequently signed into law by George Washington on July 16, 1790. "An Act for Establishing the Temporary and Permanent Seat of the Government of the United States." This was followed by Washington's Proclamation 1 on January 24, 1791, which provided the foundation for laying the boundary stones originally delineating 100 square miles for the new Federal City (Washington, DC) (Figure 1).

So why is it that the District does not look like the intended diamond or rhombic shape as envisioned by Washington or Jefferson? In previous articles, we learned that a third of this shape was retroceded to Virginia in 1846. A second, perhaps more profound question arises: If the size, location, and shape of the District are mandated by Law then why is the District's present size roughly 68 square miles?

More on this later.

Please be aware this article contains proprietary photos never-before-published.

Con't Pg. 18

Convenient Before & After Hours Pickup

CAPITAL CAR CARE

Complete Automotive Service

Established 1977

7978 Forbes Place

(behind Ravensworth Shopping Center)

703-321-8981

60 Years of Servicing Cars by Three Generations of Sterns

7:30am - 5 pm M-F

“Early bird” drop off



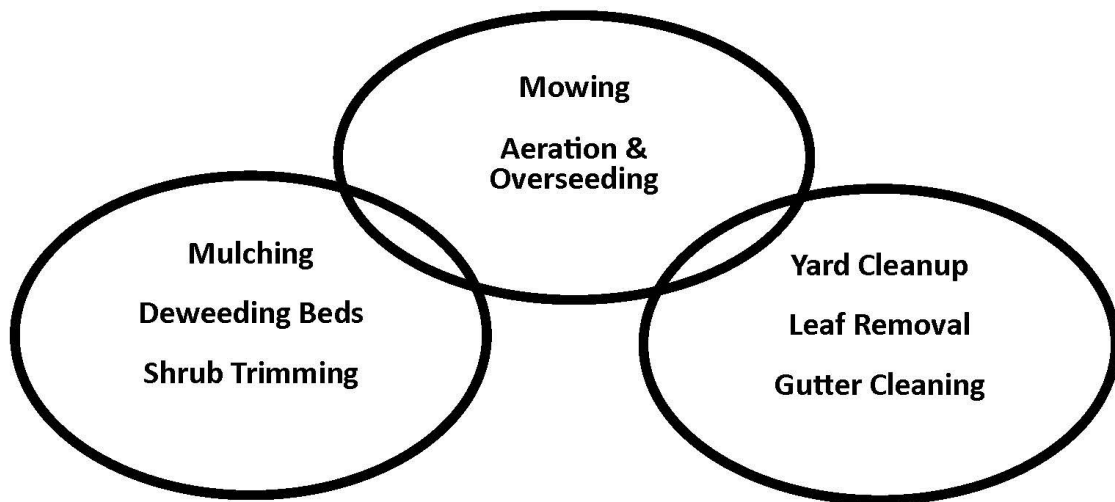
CLC
CRAIG'S LAWN CARE
EST. 1985 / LICENSED & INSURED

Affordable Mowing Services to Meet your Budget

5th Mow Free* Senior Citizen Discount**

MOWING PRICES STARTING @ \$30

(Based on 3000 SF)



For a FREE estimate, call **703-385-1641**
or visit www.craigslawn.com

*Limit one per new customer and only for those who sign up for regular service.
**Applies to regular mowing service only.

Because Every Child Should Know How To Swim



KIDS FIRST
Swim Schools
Springfield

RAVENSWORTH SHOPPING CENTER
5238 PORT ROYAL ROAD
SPRINGFIELD, VA 22151
703-321-7946

Con't from Pg. 14

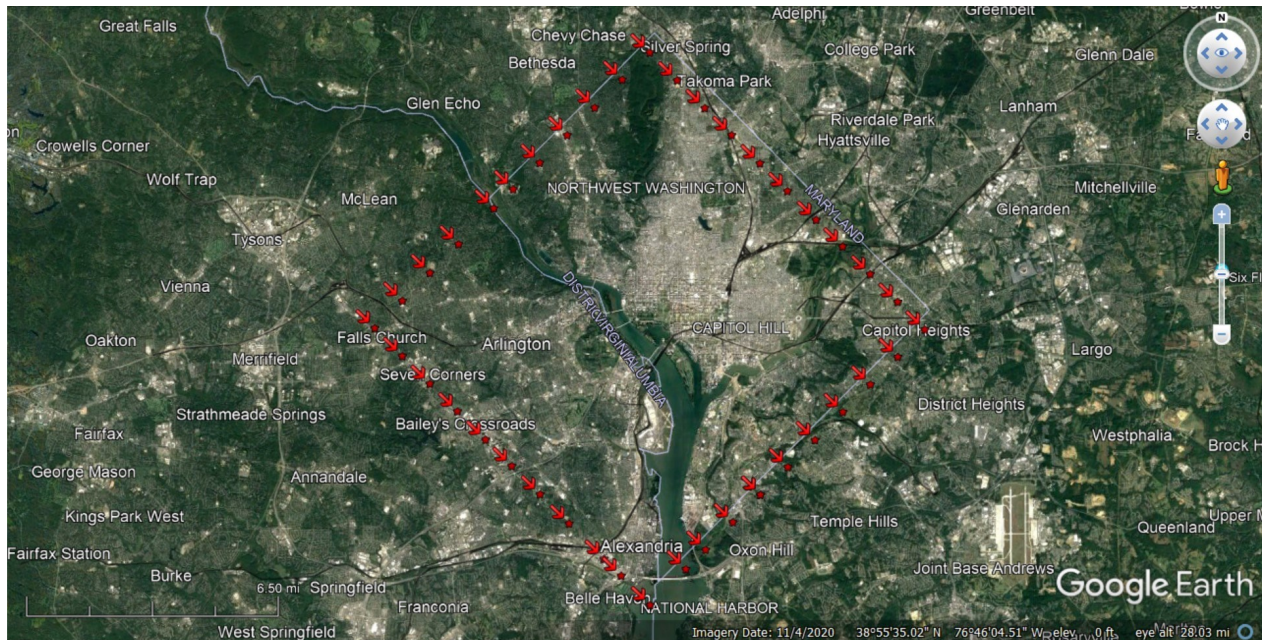


Figure 1: Point plots by author, 2022.

East Cornerstone: Junction of Eastern & Southern Avenues NE, Prince George’s County, Maryland/ Washington, DC

This is the easternmost of the forty boundary stones. It lies along a footpath east of the junction. This stone is notable for one characteristic – its size. All cardinal boundary stones (north, south, east, west) were sawed to be of exact-measured dimensions and all intermediate or milestones were to be of their own-respective dimensions. The cardinal stones were to be cut in a size measuring three feet above and two below ground. Intermediate stones were sawed two feet above and two below ground.



Figure 2:

Left inset: Frederick E. Woodward, “A RAMBLE ALONG THE BOUNDARY STONES OF THE DISTRICT OF COLUMBIA WITH A CAMERA,” Oration before the Columbia Historical Society, May 14, 1906.



Figure 3: East Cornerstone, Author, 2018.

The East Cornerstone breaks this mold as it appears to have been inadvertently switched with the Southeast 3 Boundary Stone at the initial laying in 1792. The East Cornerstone is the only cardinal stone. This stone still marks the boundary between Washington, DC & Prince George’s County, Maryland.

Southeast 1 Boundary Stone: Southern Avenue Southeast & D Street, Southeast, Keshet Israel Cemetery, Prince George’s County, Maryland

This marker no longer delineates the DC and MD border. It is in the Capitol Heights, Maryland neighborhood on the eastern side of Southern Avenue, Southeast.



Figure 4: Southeast 3 Boundary Stone, Author, 2020.

Southeast 2 Boundary Stone: 4345 Southern Avenue Southeast & Rail Street, Prince George’s County, Maryland

This stone is in the front yard of a residence adjacent to Southern Avenue, Southeast, and no longer marks the DC/MD border.

Con't Pg. 19

Con't from Pg. 18

Southeast 3 Boundary Stone: Capital Crossing Apartments, Southern Avenue Southeast, Prince George's County, Maryland

This curiosity is the aforementioned mistake. It should have been placed as the cardinal East Cornerstone in 1792 but was left as this milestone instead.

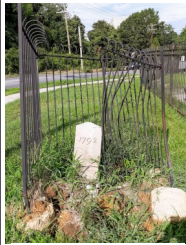


Figure 5: Southeast 4 Boundary Stone, Author, 2020.

Southeast 4 Boundary Stone: Kings Crossing Condominiums/Southern Avenue Southeast & Naylor Road, Prince George's County, Maryland

This unfortunate stone has borne the brunt of multiple incursions over the centuries. As Frederick E. Woodward reported in the early 20th Century, he stated the condition was “worn and rounded” likely as a result of soldiers using it as target practice during the Civil War. By the 1980s the original stone was run over by a truck. The nearby Capital Crossing Apartments manager took the stone and kept it in the complex until the early 1990s when it was given to the DC Consumer & Regulatory Affairs (DCRA), which oversees all surveying for the District. In 2015, a replica stone was erected at the original location. Unfortunately, this stone, too, has suffered the same fate as its original, being struck by a vehicle in mid-2020.

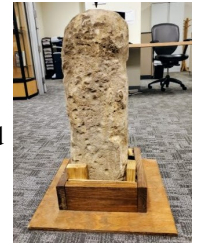


Figure 6: Original Southeast 4 Boundary Stone, DCRA, 2020.

Southeast 5 Boundary Stone: Southern Avenue Metro & Metrobus Station, Prince George's County, Maryland

This marker is located north and adjacent to the Metro station. It has an anomalous circular wrought-iron gate which is usually only found with the cardinal cornerstones. However, the design and placement of the iron enclosures fall to the individual local chapters of the Daughters of the American Revolution (DAR) – in this case, it was assigned to the DAR Louisa Adams Chapter in 1916 but is now under custodial care by the Eleanor Wilson Chapter, DAR.

Southeast 6 Boundary Stone: 901 Southern Ave Southeast, Prince George's County, Maryland

This marker sits alongside Southern Avenue, Southeast in the front lawn of a former elementary school, now housing a Self-Storage Plus establishment. It, too, suffered the consequences of a vehicle collision in the early 2000s where the stone was severed at its base. It was later restored and reinstalled at its original location.

Southeast 7 Boundary Stone: Barnaby Run/Forman Mills Department Store, Prince George's County, Maryland

Southeast 7 lies at the beginning of Maryland Route 210 (Indian Head Highway) at the intersections of South Capital Streets, Southeast/Indian Head Highway & Southern Avenue, Southeast. This stone was moved slightly in the 20th Century to allow for road expansion.

Southeast 8 Boundary Stone: Blue Plains Auto Impound Lot/Oxon Cove Park & Oxon Hill Farm, Prince George's County, Maryland

Inarguably, Southeast 8 is the second-most difficult boundary stone to reach. It is located in a marshy-swamp area adjacent to the southeast fence line of the Blue Plains Auto Impound Lot. This poor marker has also suffered multiple tragedies. It was lost in the 1950s when the Blue Plains construction commenced. Then it was replaced but again lost when the lot was paved. In 2015, the local DAR chapter (Monticello Chapter, D.C.) again replaced the marker with a replica, but its current location falls just outside of the District line.



Figure 7: Southeast 8 Boundary Stone, David Chandler, 2019.

The land in the vicinity of Southeast 8 was purchased by another notable historical figure. William Marbury (Marbury vs. Madison) was convinced that Thomas Jefferson's center point of the Federal City was inaccurate and that eventually the district center would be shifted ¼ mile to the northwest. He purchased the land encompassing the Blue Plains area with the vision of this area being a fruitful land investment once the District center point was shifted. For further information please see “DISCOVERING OUR NATION'S FIRST

Con't Pg. 22



Ravensworth Shell



SERVICE/REPAIRS



The Washington Area's
Consumer Report Magazine



VA INSPECTIONS



SAFETY INSPECTIONS



GASOLINE & DIESEL

703-321-8280

We are on Your Team
When it Comes to Car Care!

- ✓ *Locally Owned and Operated Since March, 1966*
- ✓ *Complete Automotive Service*
- ✓ *Foreign and Domestic*
- ✓ *Same Day Service (in most cases)*
- ✓ *12 Month/12,000 Mile Guarantee*
- ✓ *Open 7 Days-a-Week for Auto Service, Repairs and Inspections*
- ✓ *Open 24 Hours for Gasoline/Diesel*
- ✓ *Emergency Road Service*



8011 Braddock Road • Springfield, VA 22151 • RavensworthShell.com

In the Ravensworth Shopping Center • Braddock Rd and the Beltway



C.D. SHANAHAN'S
HEATING & COOLING, LLC

Quality and Comfort You Can Rely On

CDSHANAHANS@GMAIL.COM

571 429 0919

\$79 Heating/Cooling Check up



HVAC SERVICES

We've got you covered for all your HVAC needs!



HEATER REPAIR

We'll help you stay warm in the winter months.



HVAC REPAIR

Don't let the outer elements get to you. Call today for professional HVAC repair services.

Check us out on Yelp!

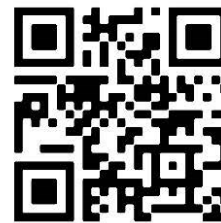


★★★★★ 27 reviews
Response time: 20 minutes
Response rate: 95%

Visit our Website!



Check our 5 star Google Reviews!



Verified Customer Reviews
★★★★★

Con't from Pg. 19

MONUMENTS: PART IV -- THOMAS JEFFERSON WAS WRONG!" The Ravensworth Farmer, Issue #6, April 2022.

Southeast 9 Boundary Stone: Fox Ferry Point, Prince George's County, Maryland/Washington, DC

This stone represents the terminus of the Federal boundary stones set in 1791-1792 that delimited the 100 square miles of the Federal City, renamed Washington, District of Columbia in 1800. Following this line to the southwest for one mile will take you back to the South Cornerstone at the Jones Point Lighthouse at Hunting Creek. For further information please see "DISCOVERING OUR NATION'S FIRST MONUMENTS: PART II -- THE SOUTHWEST LINE," The Ravensworth Farmer, Issue #1, October 2021.



Figure 7: Southeast 9 Boundary Stone, David Chandler, 2021.

This marker has two other important characteristics – it is, by far, the most difficult of the 40 Boundary Stones to visit. This stone represents the "Holy Grail" of Boundary Stones given its difficulty to locate. It is located at the mouth of Oxon Creek and the Potomac River, just south of the Oxon Creek Bridge on the Anacostia Freeway (I-295). If you are looking to see what the District area looked like back in the late 18th Century when the stones were placed, then this is the ideal place to see a mostly unspoiled portion of the District. This marker has been shifted laterally, at least twice over the centuries, but remains the border between the District & Maryland. Also, as an admonishment, I have posited with previous Boundary Stones, do not attempt visiting this location alone as the especially rugged terrain, associated wildlife, and lack of cell phone reception make this a remarkably difficult trek to attempt. Most people who have attempted this endeavor have never reached nor found the stone before giving up as a result of the aforementioned challenges.

So why is it that the Congressionally mandated 100-square miles diamond shape has not been maintained? The simple answer is convenience. Neither Virginia nor Maryland is willing to give up the necessary 22 plus square miles retroceded to Virginia in 1846. The area retroceded (Arlington County, City of Falls Church, and Old Town Alexandria) is one of the most-affluent tracts of land in the United States. Multiple inquiries on this topic have been sent to Washington, DC Mayor Muriel Elizabeth Bowser (D) and Maryland Governor Larry Hogan (R) but have thus far gone unanswered.

But there have been attempts to cede Maryland's former land: As recently as 2021 Representative Louie Gohmert (R-TX) introduced House Resolution #2651: "District of Columbia-Maryland Reunion Act" which aimed at retroceding all Maryland land currently in the District save for any areas within the District identified within the "National Capital Service Area," which includes "District Building, the area shall include the principal federal monuments, the White House, the U.S. Capitol, the U.S. Supreme Court Building, the federal executive, legislative, and judicial office buildings located adjacent to the Mall and the U.S. Capitol, including any federal real property affronting or abutting such areas, such as the Department of Housing and Urban Development and the Department of Energy buildings."



Figure 8: <https://statehood.dc.gov/>

Lastly, you may have seen the oft-times newsworthy attempts at making the District its own state. This recurring movement has great support but always loses steam with Republican Congress members as the heavily Democratic city would invariably yield, at least, two-additional Democrat House members and one-additional Democrat Senator. Statehood for the District would make it the smallest state – by land area, and the 49th – by population. Vermont & Wyoming are less populated.

@DDAREALESTATE 703-952-3425

TEAMDDA.COM

THE MARKET IS SHIFTING



Join our **FREE** Seller Seminar to learn everything you need to know & more!

- ✓ Why some homes still sell with multiple offers and some don't
- ✓ Ways to succeed in this CHANGING market
- ✓ Where the market is heading in the next 6 to 12 months



Wondering what your **NEW** home value is?
Would like to reserve your seat for the next Seller Seminar?

Call 703-952-3425 or scan the QR code!



DEBBIE
DOĞRUL
ASSOCIATES REAL ESTATE



Ravensworth Farm Pool Register Today!

CUSTOMER TESTIMONIALS

"I love this pool. The community is warm and welcoming and the kids have made lifelong friends here, as have I" - Heidi

"We joined the pool in 2010/11. We absolutely love being members there. They have a phenomenal swim and dive team, excellent lifeguards, and a wonderful pool compound. There are also wonderful activities held throughout the swim season. You feel like you're a part of a family. We are sad every time it closes for the season, but eagerly look forward to opening day!" - Lisa

"I drove past your pool and the pool and grounds look amazing! We have 4 kids so we wanted to have a nice playground and grounds. Most of the others we drove to see were not nearly as nice as yours!" - Paige

Submit your testimonial by emailing membership@ravensworthfarmpool.com

We love our pool ❤️ the kids have so much fun! -Sheilait



- ✓ **Swim Team**
- ✓ **Dive Team**
- ✓ **Learn to Swim Program**
- ✓ **Playground**
- ✓ **Mushroom Kiddie pool**
- ✓ **Snack bar**
- ✓ **Volleyball Courts**
- ✓ **BBQs**
- ✓ **Fun activities all summer long!**



Questions?

Email:

Membership@ravensworthfarmpool.com